

Appendix 2a

Home to School Transport Cohort Analysis

October 2018

Introduction

This analysis profiles 5 cohorts of ITP clients who are currently using non statutory home to school transport services provided by BCC. The purpose of the analysis was to help ITP consider what the impact of removing discretionary services from these users might be, with a particular focus on understanding the potential impacts for more vulnerable services users.

For this analysis we have used the ACORN demographic profiling tool to identify vulnerable service users and we have mapped the users based on their home postcodes, separating vulnerable (Groups 5 and 6) vs. non vulnerable users (Groups 1 to 3).

Contents:

1.0 Introduction

2.0 Context Setting

3.0 Methodology

4.1 Cohort Profiles

4.2 Paid For Transport

4.3 SEN Post 16

4.4 Ivinghoe Promise

4.5 Evreham Promise

4.6 Under 5's Transport

3.0 Context

Acorn Profiles, Index of Multiple Deprivation

Acorn

ACORN is a segmentation tool which categorises the households in the UK into socio-demographic types. There are five main Acorn types:

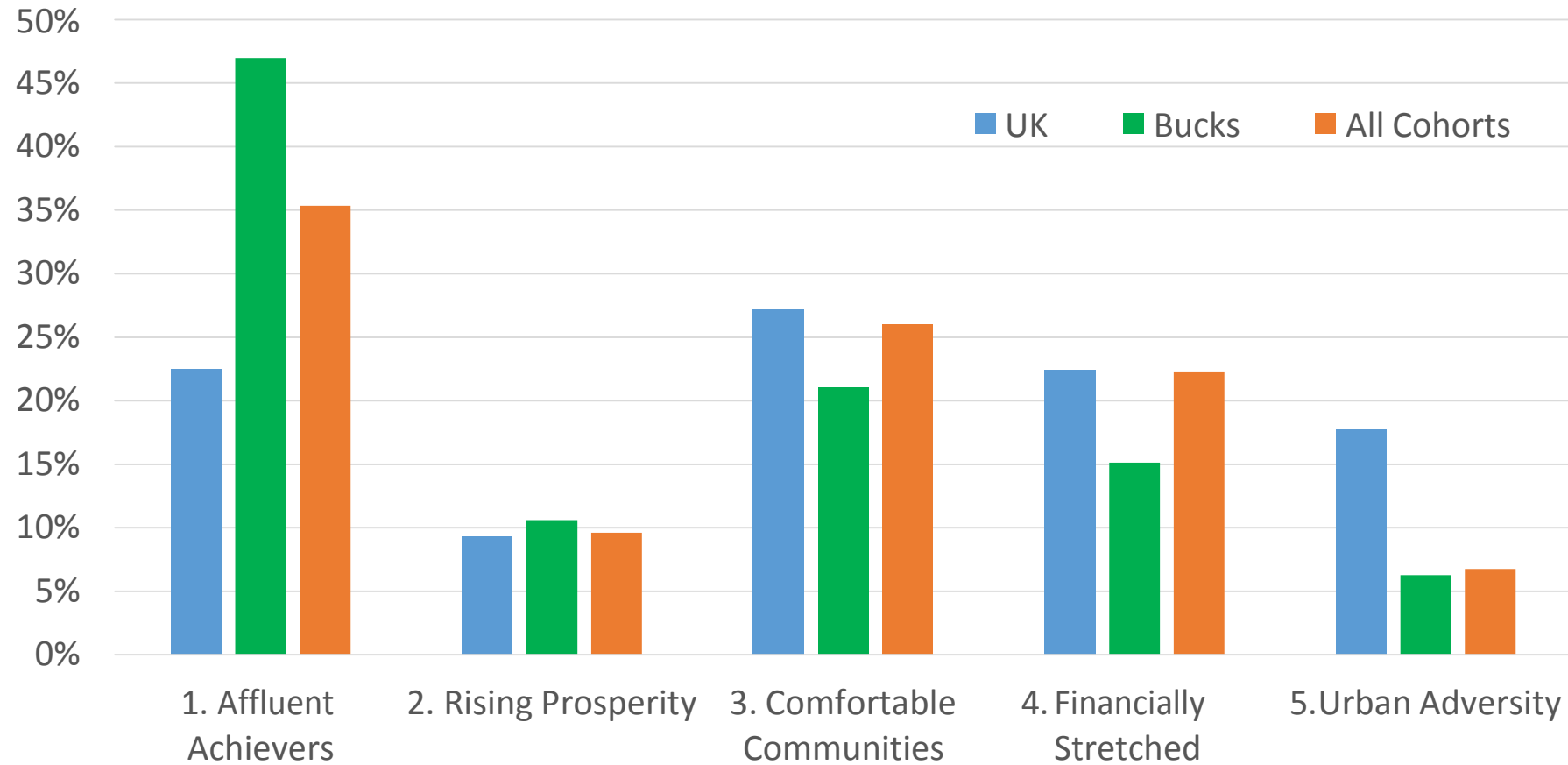
1. Affluent Achievers: 'Some of the wealthiest people in the UK. Healthy, Wealthy and Confident consumers'

2. Rising Prosperity: 'Younger, well educated, and mostly prosperous people living in our major towns and cities'

3. Comfortable Communities: 'middle-of-the-road Britain, whether in the suburbs, smaller towns or the countryside. Most people are comfortably off.'

4. Financially Stretched: 'while many people in this category are just getting by with modest lifestyles a significant minority are experiencing some degree of financial pressure'

5. Urban Adversity: 'people who are finding life the hardest and experiencing the most difficult social and financial conditions'



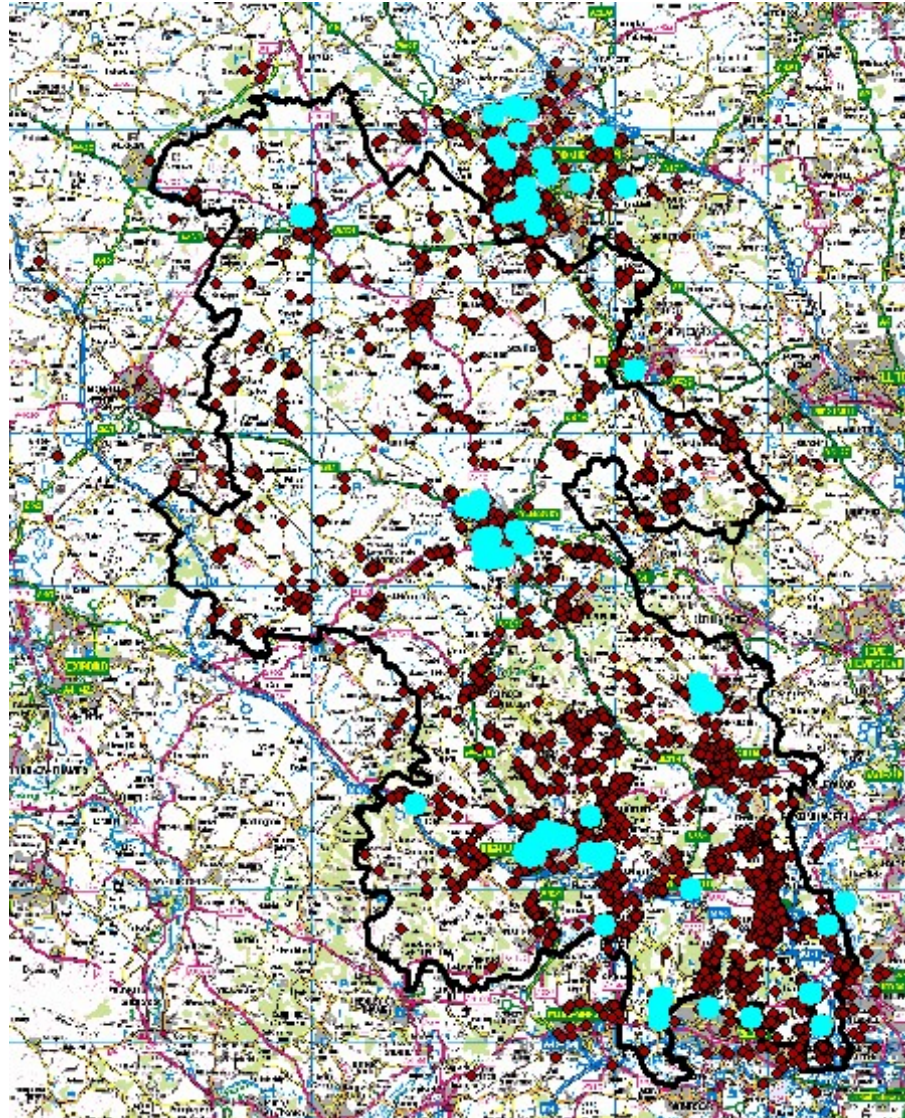
The graph above compares the ACORN Profiles of the UK as a whole (blue) and Buckinghamshire (green) with the ITP cohorts (orange) as defined in the scope for this analysis.

Acorn: Vulnerable Users

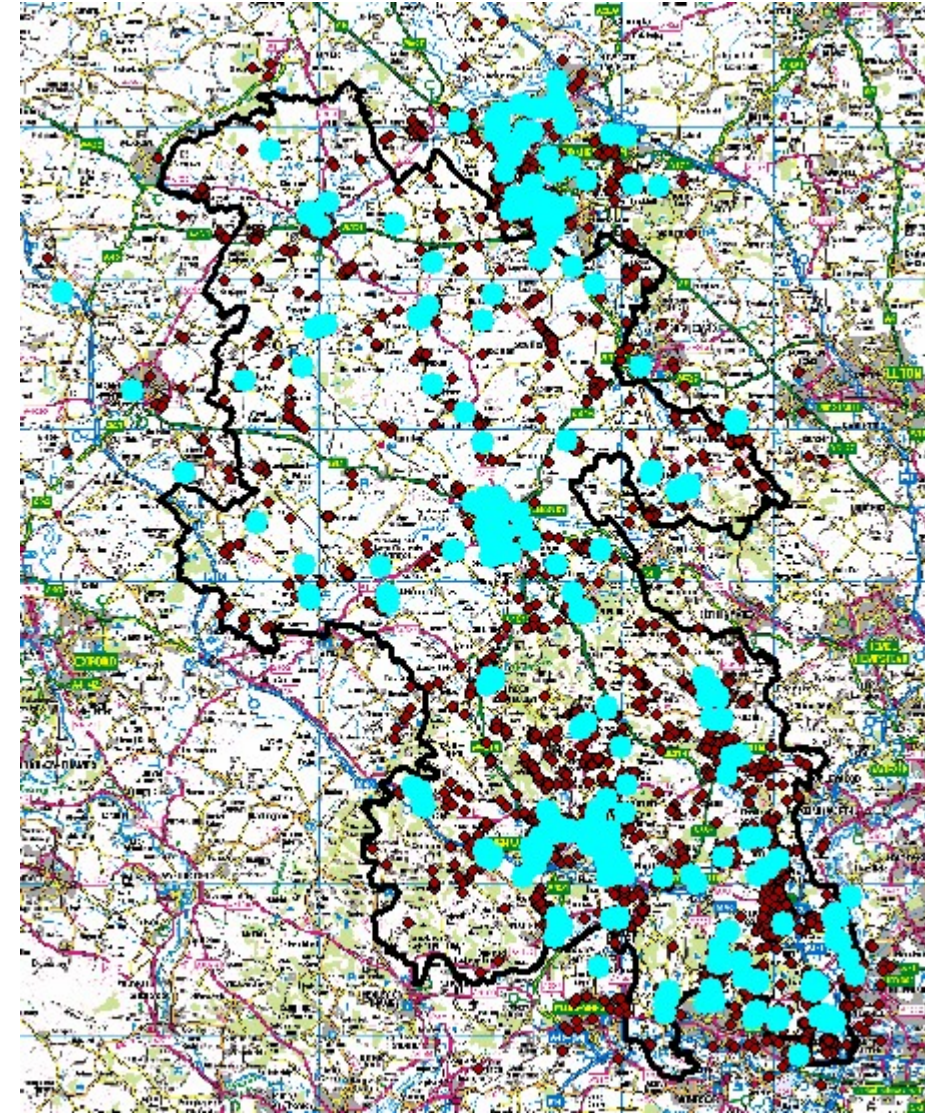
For the purposes of this analysis we have defined vulnerable users as “those living in households with an ACORN category of 4 (Financially Stretched) or 5 (Urban Adversity).”

We decided to include type 4 in our vulnerable users category as Buckinghamshire has a large rural population, and type 5 focuses on deprivation in only urban areas.

This is illustrated in the two maps to the right, which plot all services in all cohorts in scope. In the ACORN 5 map we see a cluster of blue points around Milton Keynes, Wycombe and Aylesbury. In the ACORN 4 and 5 map the blue points are more geographically dispersed.



Acorn 5



Acorn 4 and 5

ACORN: Cohort Breakdown

ACORN Types 1-5

	1. Affluent Achievers	2. Rising Prosperity	3. Comfortable Communities	4. Financially Stretched	5. Urban Adversity	Total
Paid for transport	2765 (75.1%)	281 (7.6%)	406 (11%)	200 (5.4%)	32 (0.9%)	3684
SEN Post-16 provision	141 (35.2%)	34 (8.5%)	85 (21.2%)	92 (22.9%)	49 (12.2%)	401
Ivinghoe Promise	68 (50.4%)	11 (8.1%)	42 (31.1%)	14 (10.4%)	0 (0%)	135
Evreham Promise	86 (28.8%)	36 (12%)	91 (30.4%)	78 (26.1%)	8 (2.7%)	299
Under 5's transport	3 (37.5%)	0 (0%)	1 (12.5%)	4 (50%)	0 (0%)	8

Non Vulnerable (Types 1-3) vs Vulnerable (Types 4&5)

	Non Vulnerable (1-3)	Vulnerable (4&5)
Paid for transport	3452 (93.7%)	232 (6.3%)
SEN Post-16 provision	260 (64.8%)	141 (35.2%)
Ivinghoe Promise	121 (89.6%)	14 (10.4%)
Evreham Promise	213 (71.2%)	86 (28.8%)
Under 5's transport	4 (50%)	4 (50%)

This table shows the proportion of 'non-vulnerable' to 'vulnerable' socio-demographic groups in each of the cohorts we are considering.

Please see section 4, for a more in-depth look at these breakdowns.

Index of Multiple Deprivation

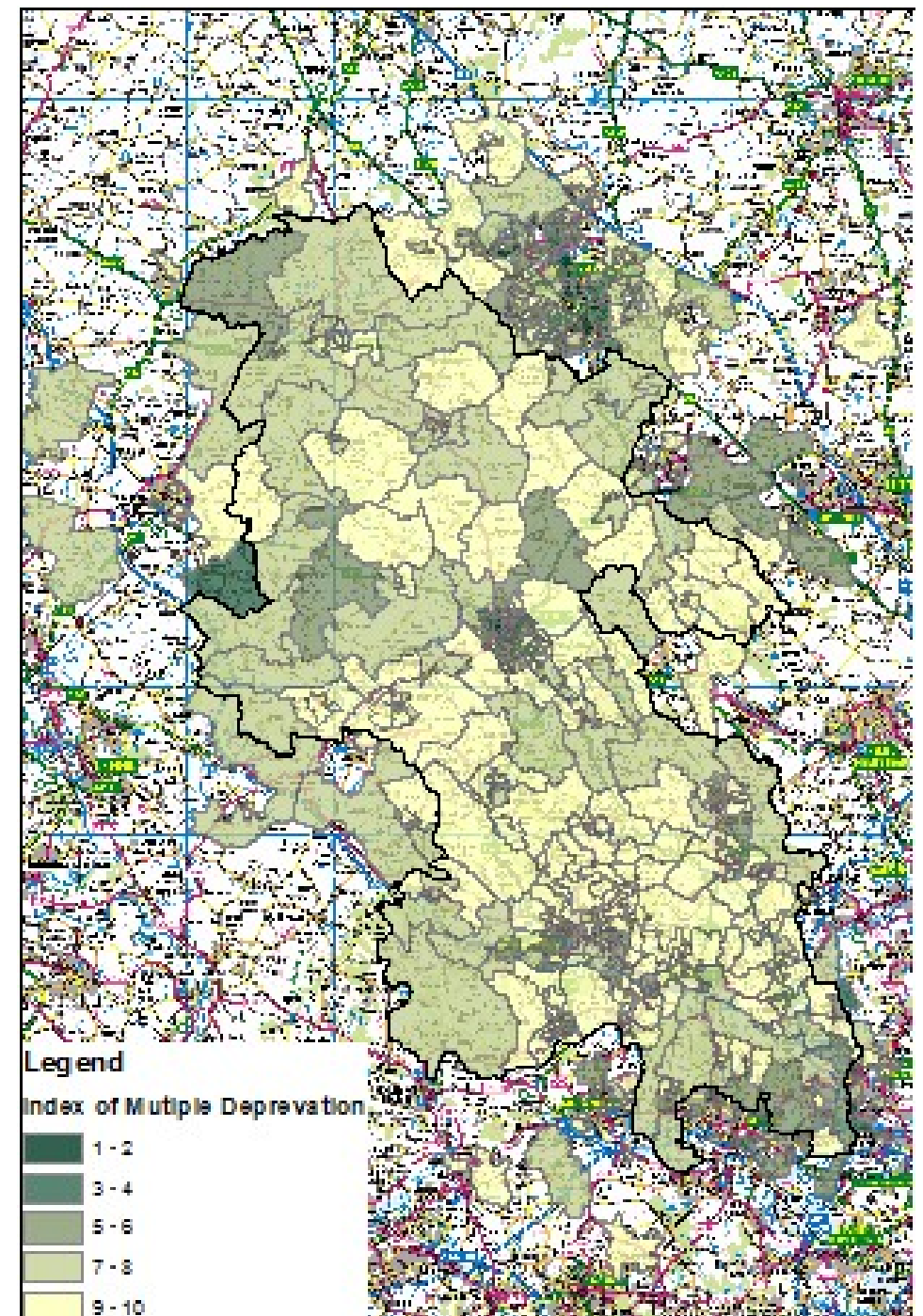
This map is provided for context to show where the most deprived places in Buckinghamshire and the surrounding areas are.

The Index of Multiple Deprivation is a governmental UK wide study which scores and ranks localities of seven aspects of deprivation (Income, Employment, Health, Education, Housing, Crime and Living Environment).

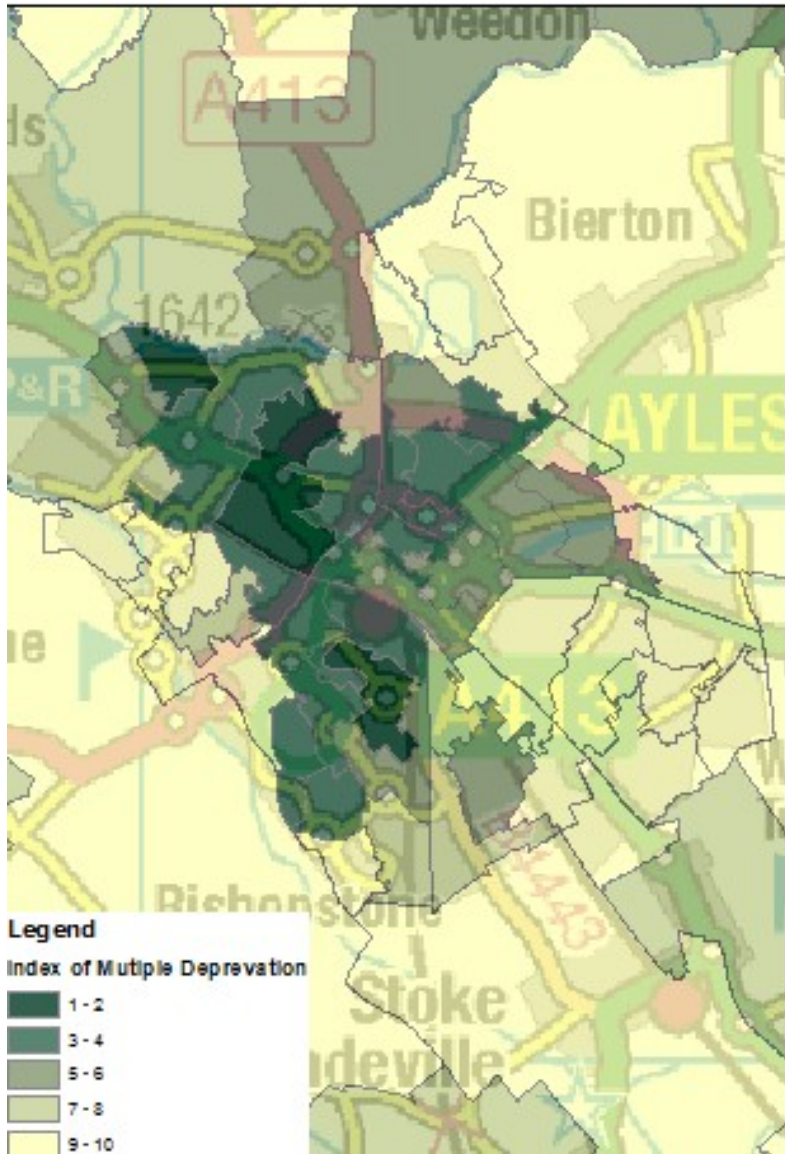
The map on the right is divided into Lower Super Output Areas (LSOA). LSOA is a ONS (Office of National Statistics) unit of geography used to analyse small areas. LSOAs typically have a population of between 1000 1500.

Every LSOA in the UK has been ranked and assigned an IMD decile. The LSOAs on the map to the right have been coloured according to their decile with dark colours representing high deprivation and light colours representing low deprivation. The LSOAs that have been coloured are populated by at least one ITP service user from the five cohorts listed on the previous slide.

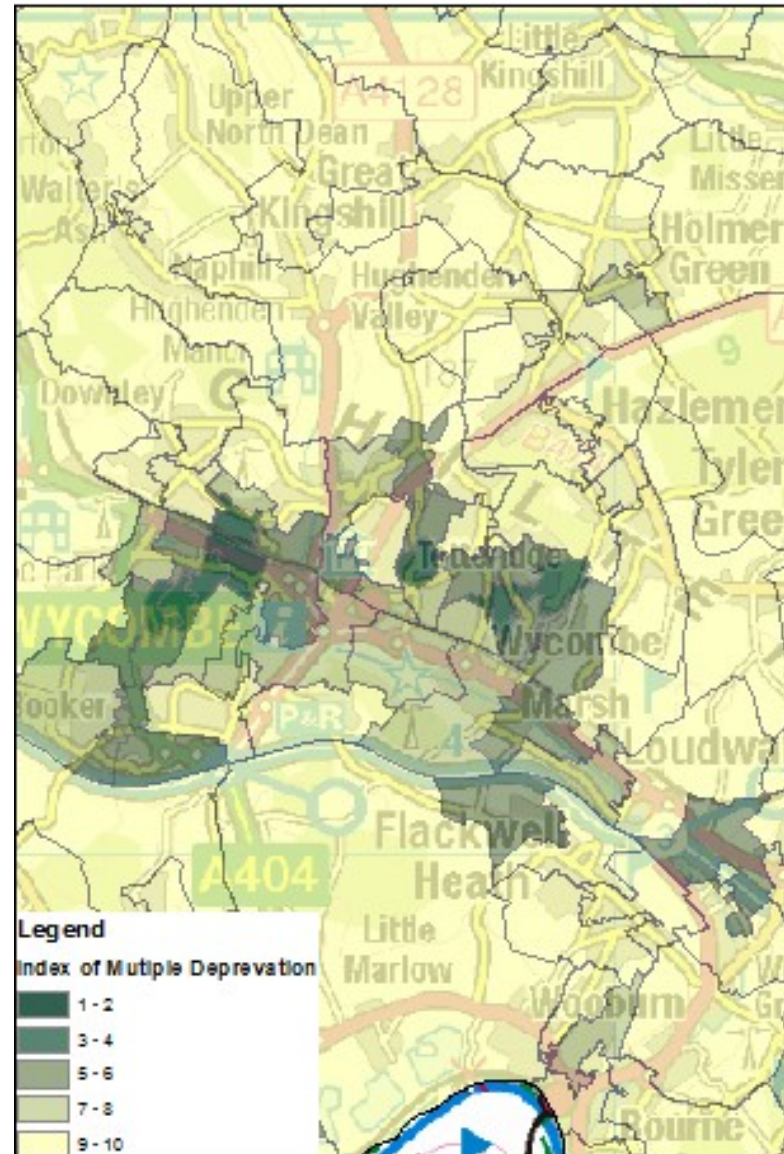
The most deprived areas are the more urban areas of Aylesbury, High Wycombe and Milton Keynes



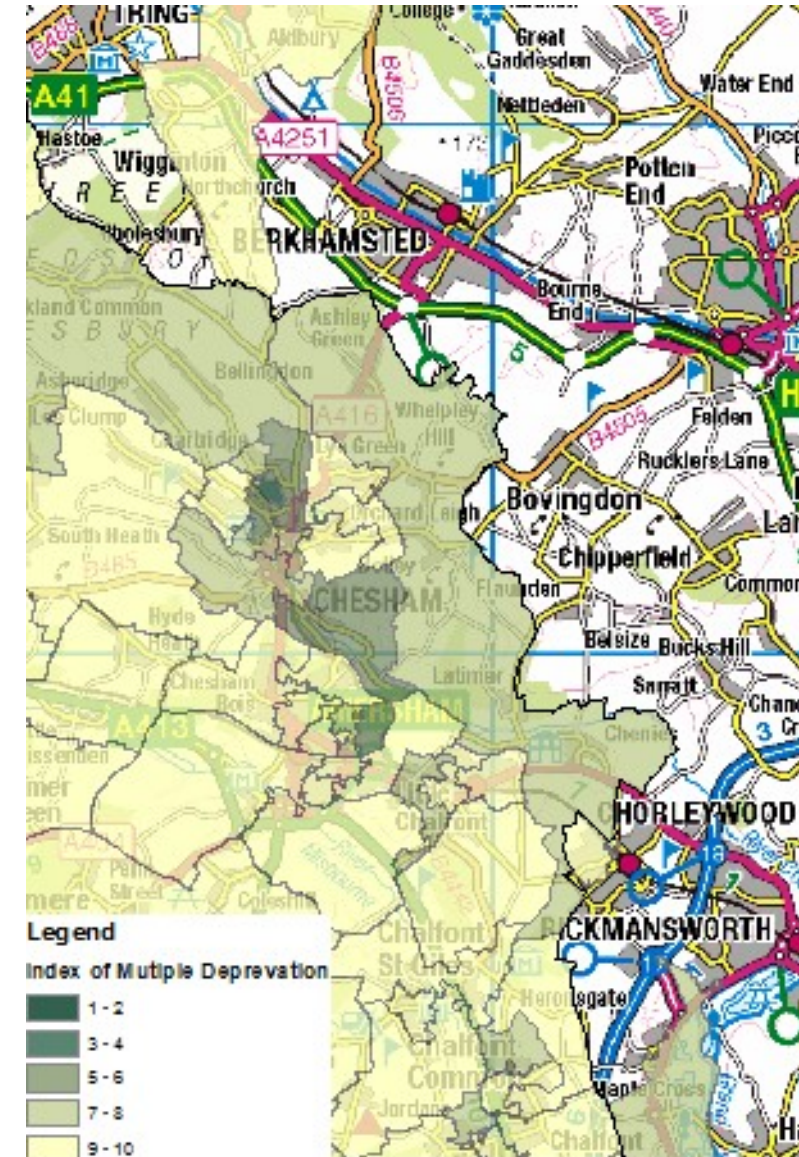
Index of Multiple Deprivation



Aylesbury



High Wycombe



Chesham and Amersham

3.0 Methodology

Notes on Methodology

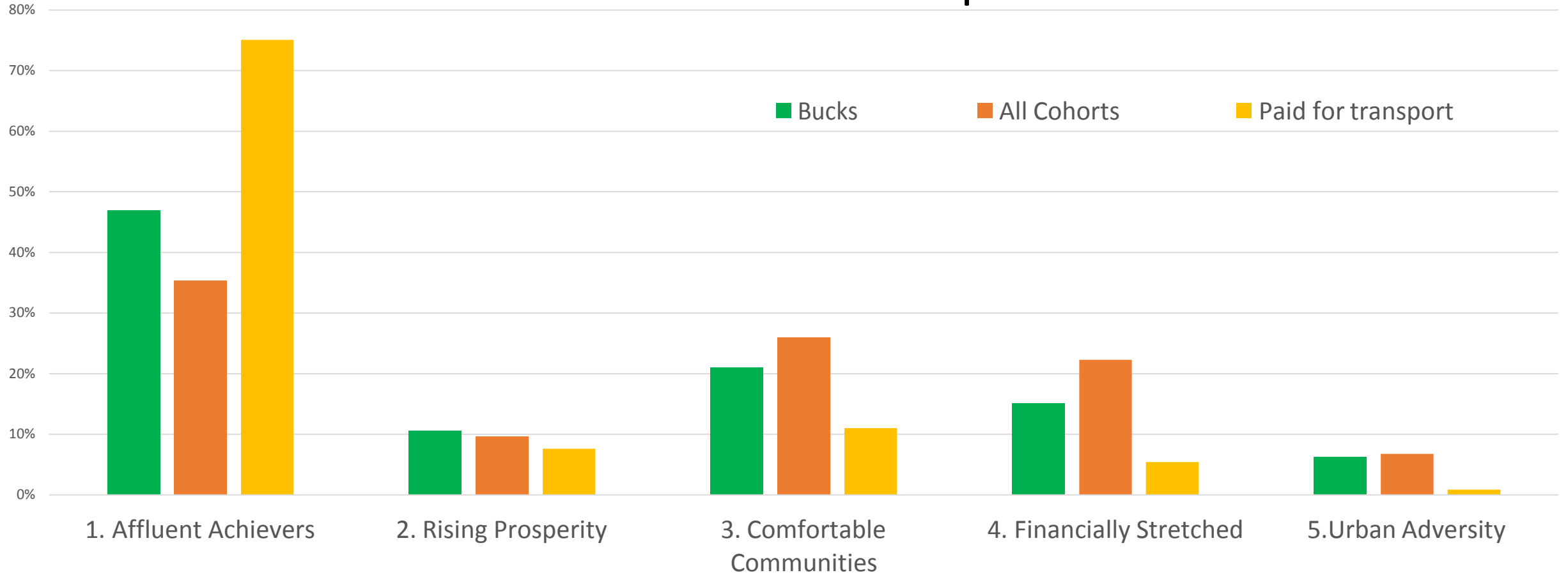
The table below shows the count and percentage of service users we were able to map and assign an ACORN classification to (based on home postcode). If a user has not been geocoded it is because the postcode attached to their record has not been recognised. BCC have an ACORN dataset for Buckinghamshire and the surrounding buffer zone (few kilometres). We have not been able to provide an ACORN classification for all users as some live in areas which are outside the boundary of the data set and buffer zone.

	Count	Geocoded Count	Geocoded %	Acorn Classified Count	Acorn Classified %
Paid for transport	3728	3709	99.5%	3235	86.8%
SEN Post-16 provision	408	407	99.8%	407	99.8%
Under 5's transport	8	8	100.0%	8	100.0%
Ivinghoe Promise	135	135	100.0%	135	100.0%
Evreham Promise	303	303	100.0%	303	100.0%

Data Health Warning: It should be noted that the ACORN data that BCC used is classified at postcode rather than household level, i.e. one acorn category is assigned to all households within a postcode. This method is less accurate than using household classification and potentially means that some users have not been assigned the optimum ACORN category.

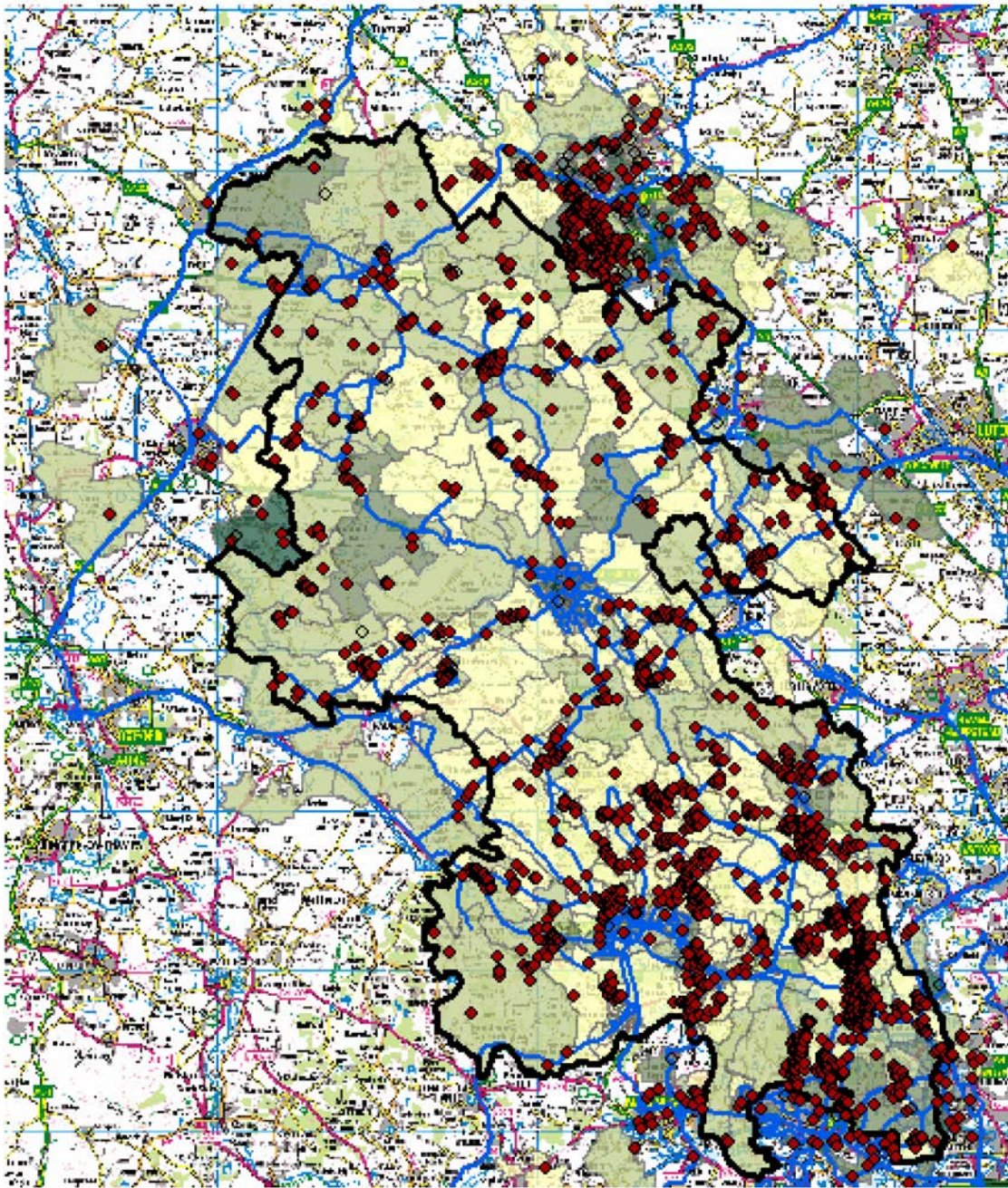
4.0 Cohort Profiles

Paid For Transport

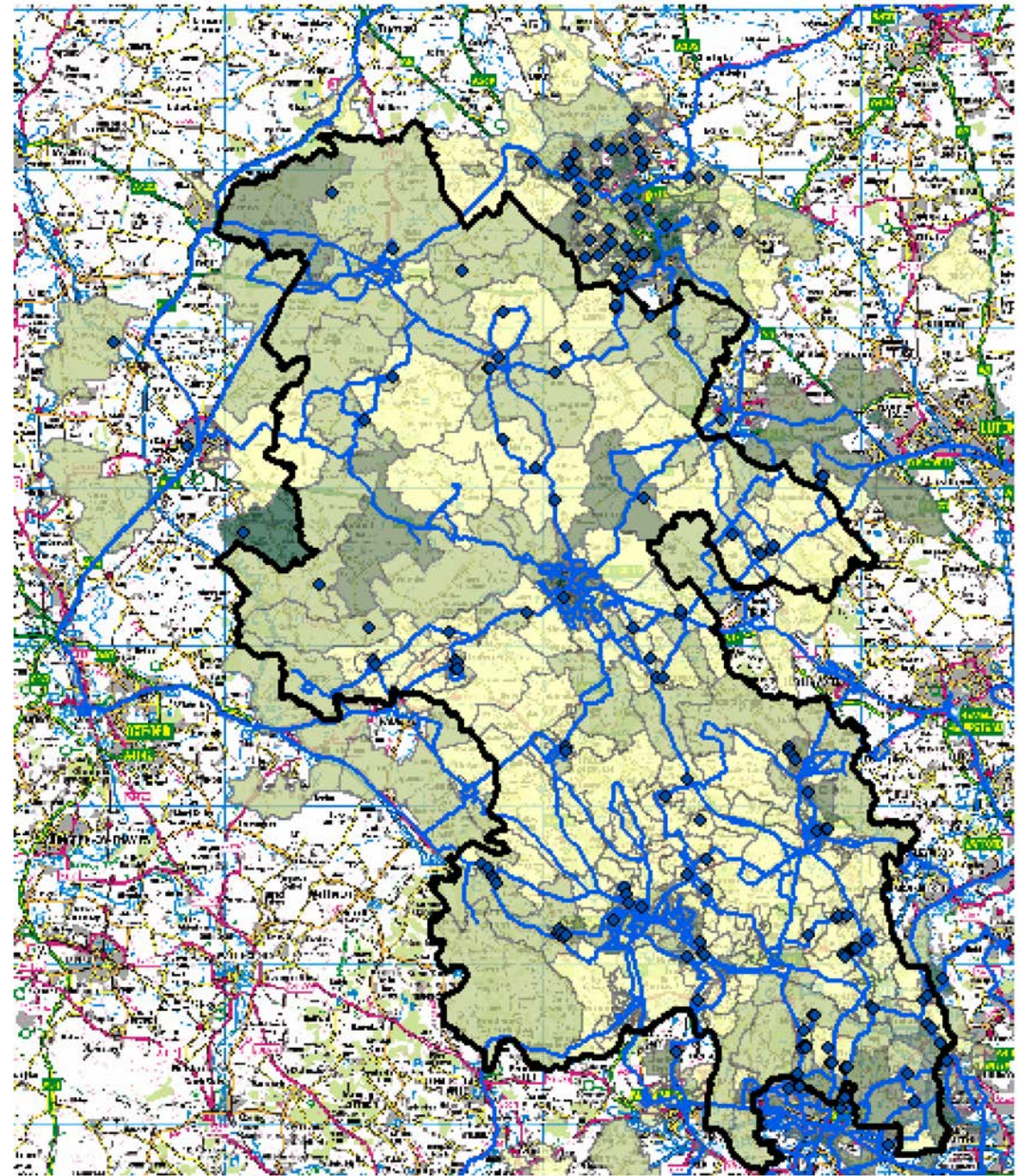


	1. Affluent Achievers	2. Rising Prosperity	3. Comfortable Communities	4. Financially Stretched	5. Urban Adversity
Bucks	47.0%	10.6%	21.0%	15.1%	6.3%
All Cohorts	35.5%	9.6%	26.0%	22.3%	6.8%
Paid for transport	2765 (75.1%)	281 (7.6%)	406 (11%)	200 (5.4%)	32 (0.9%)

75.1% of the Paid For Transport cohort come from households classified as Affluent Achievers (Type 1). 78.9% of the Cohort attend Grammar Schools.

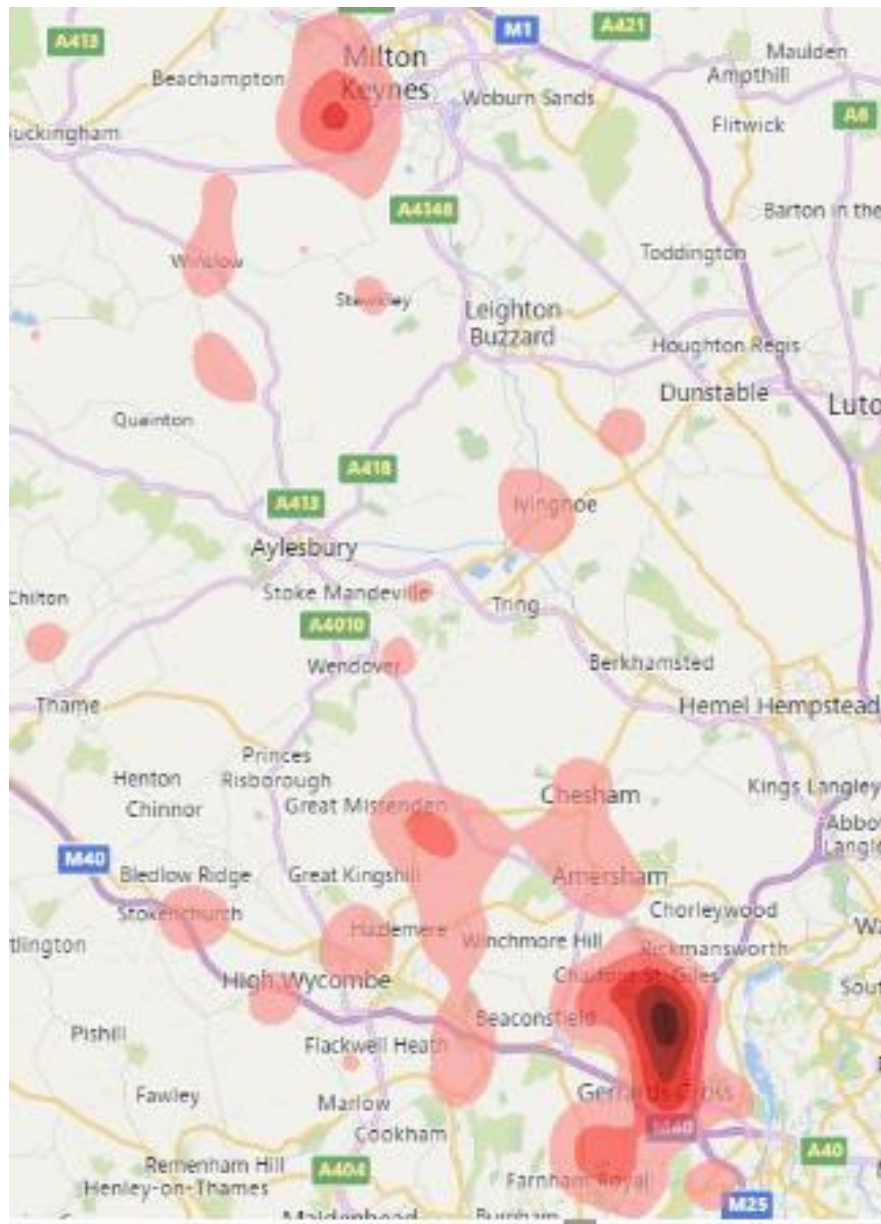


Non Vulnerable Paid For Users



Vulnerable Paid For Users

WORK IN PROGRESS:
These maps were produced in power BI, looking at whether we can redo these in Arc GIS with additionally layers

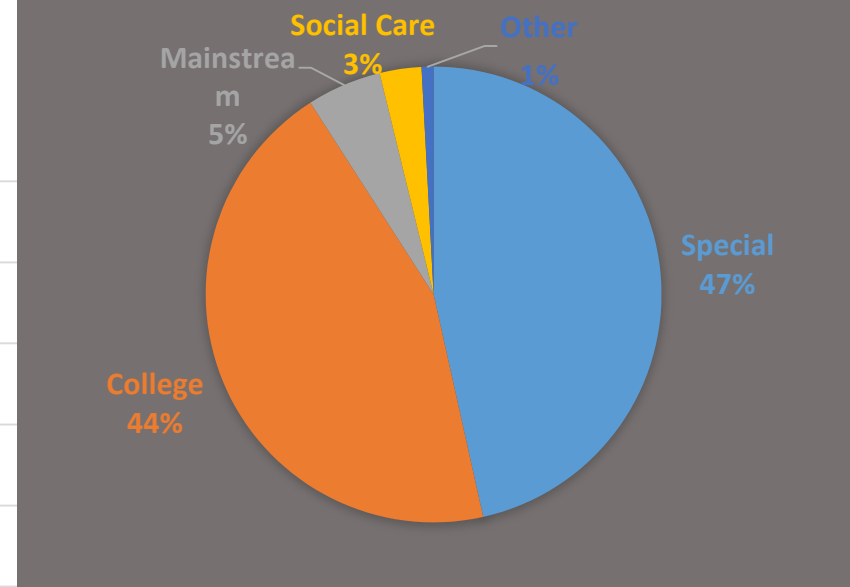
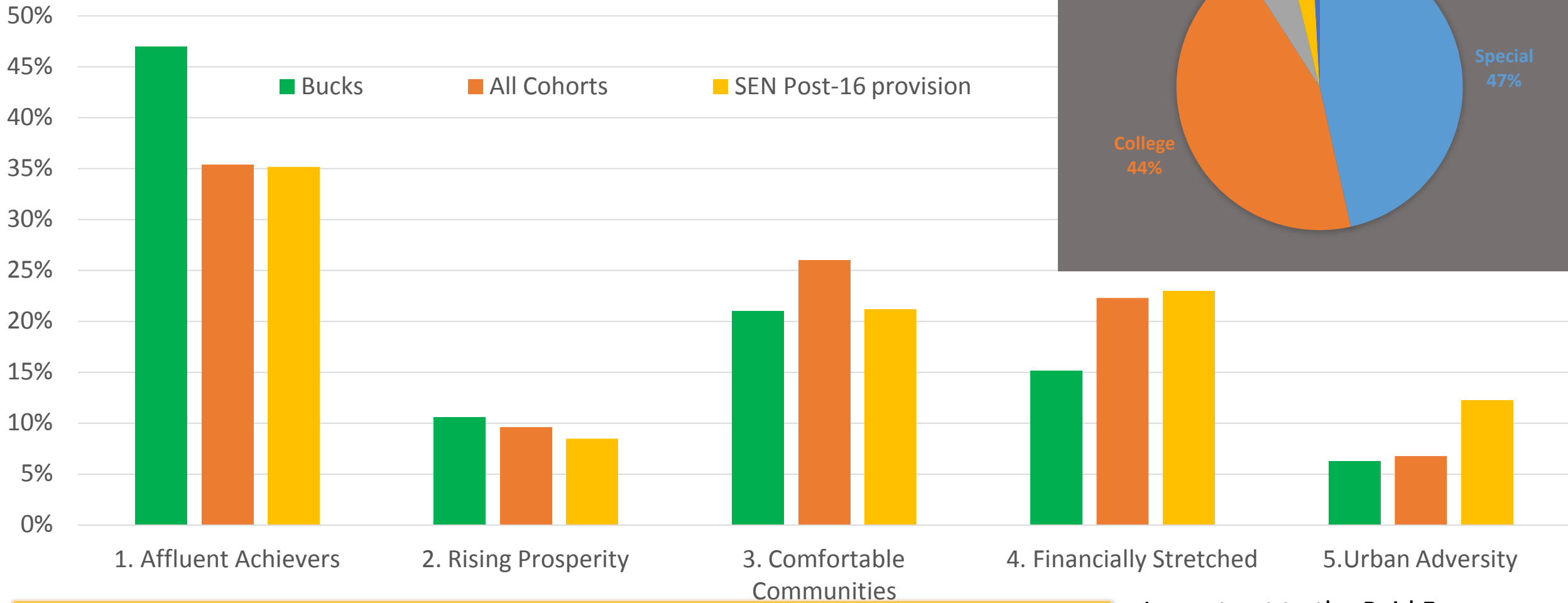


All Paid For Users



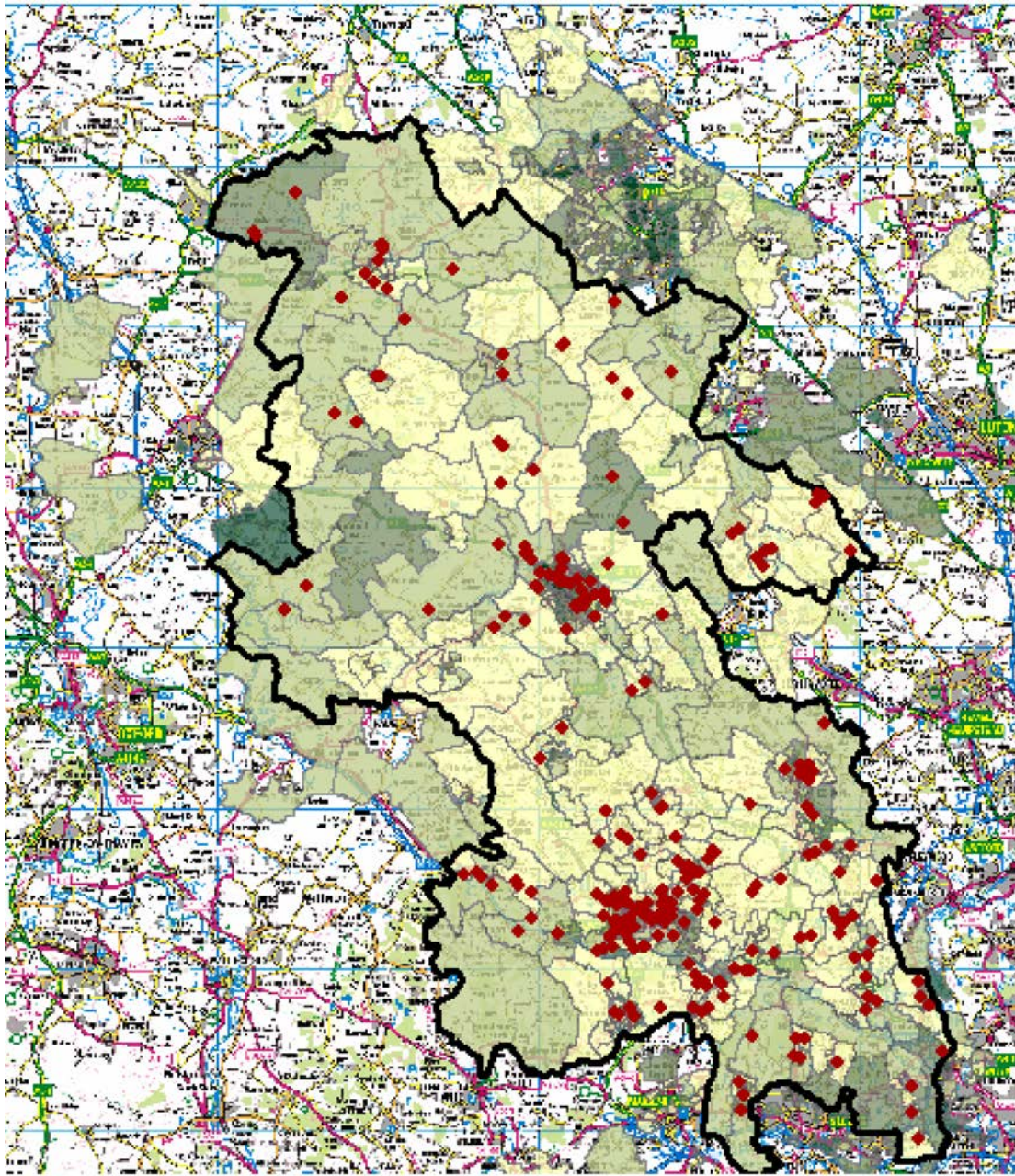
Vulnerable Paid For Users

SEN Post 16

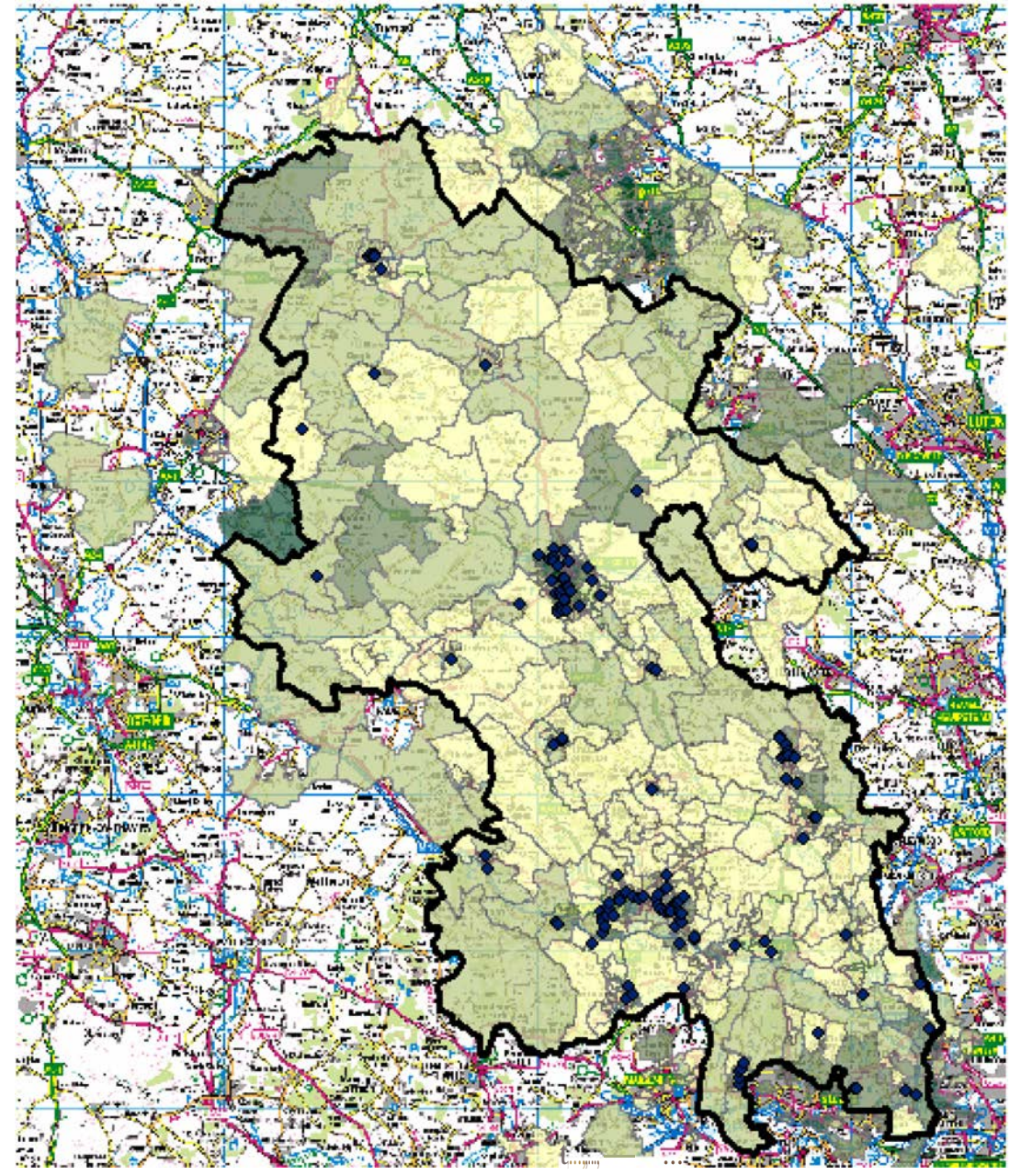


	1. Affluent Achievers	2. Rising Prosperity	3. Comfortable Communities	4. Financially Stretched	5. Urban Adversity
Bucks	47.0%	10.6%	21.0%	15.1%	6.3%
All Cohorts	35.5%	9.6%	26.0%	22.3%	6.8%
SEN Post 16	141 (35.2%)	34 (8.5%)	85 (21.2%)	92 (22.9%)	49 (12.2%)

In contrast to the Paid For cohort the SEN Post 16 Group have a higher concentration of service users in Acorn types 4 and 5 versus the bucks average



Non Vulnerable SEN Users



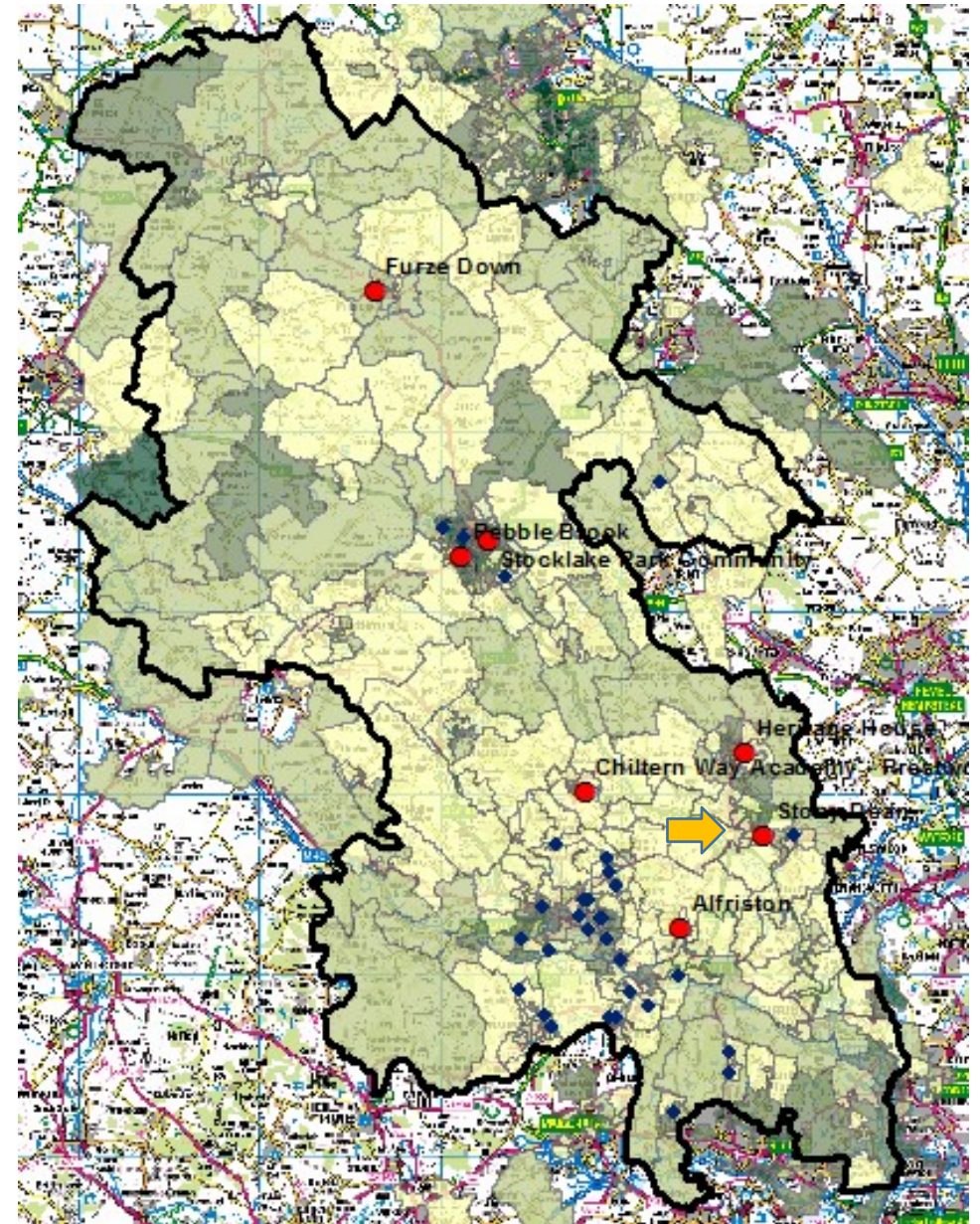
Vulnerable SEN Users

SEN Post 16 – Special Schools

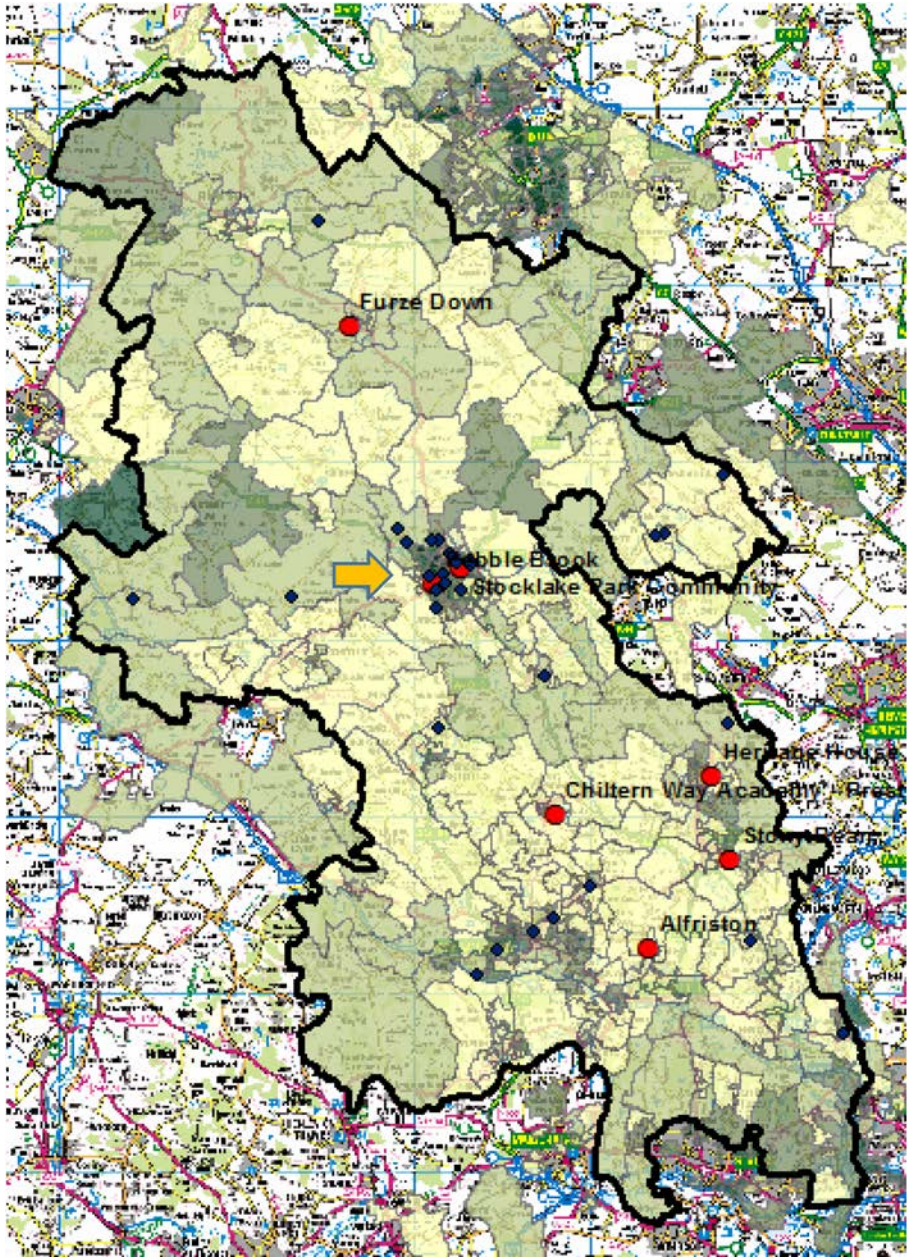
47% of the Sen Post 16 cohort attend special schools. The table below gives a breakdown of the schools they attend.

School Name	Count of clients from Sen Post 16 Cohort Transported
Furze Down School	35
Stony Dean School	31
Stocklake Park School	32
Alfriston School	18
Heritage House School	16
Pebble Brook School	14
Chiltern Way Federation-Prestwood Campus	13
Stocklake Park School	10
Other Schools	18

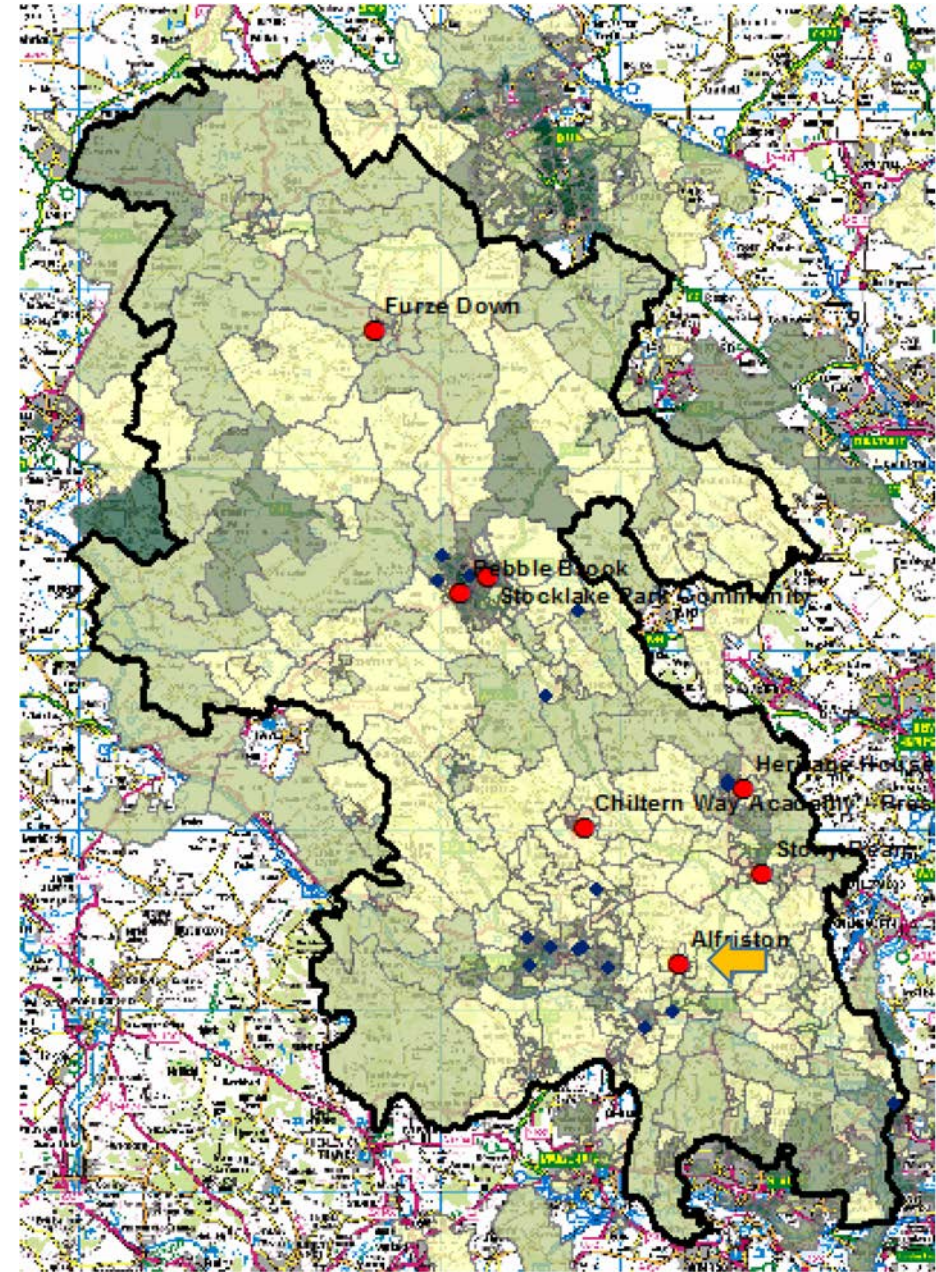
The maps on the right and on the following pages show where the pupils attending these schools are travelling from. These maps show that the majority of the clients in this cohort are not attended there closest school



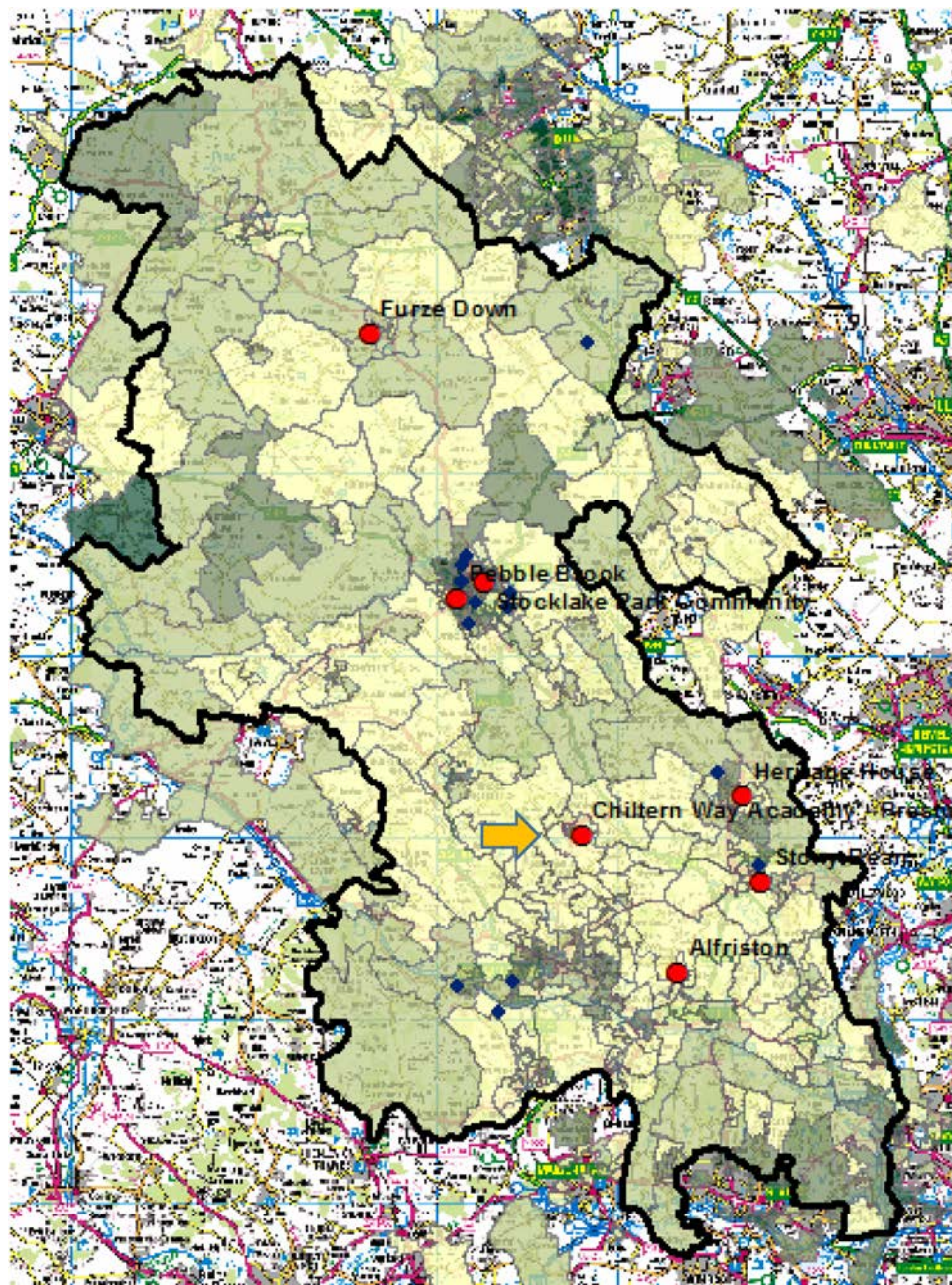
Location of Sen Post 16 clients travelling to Stony Dean



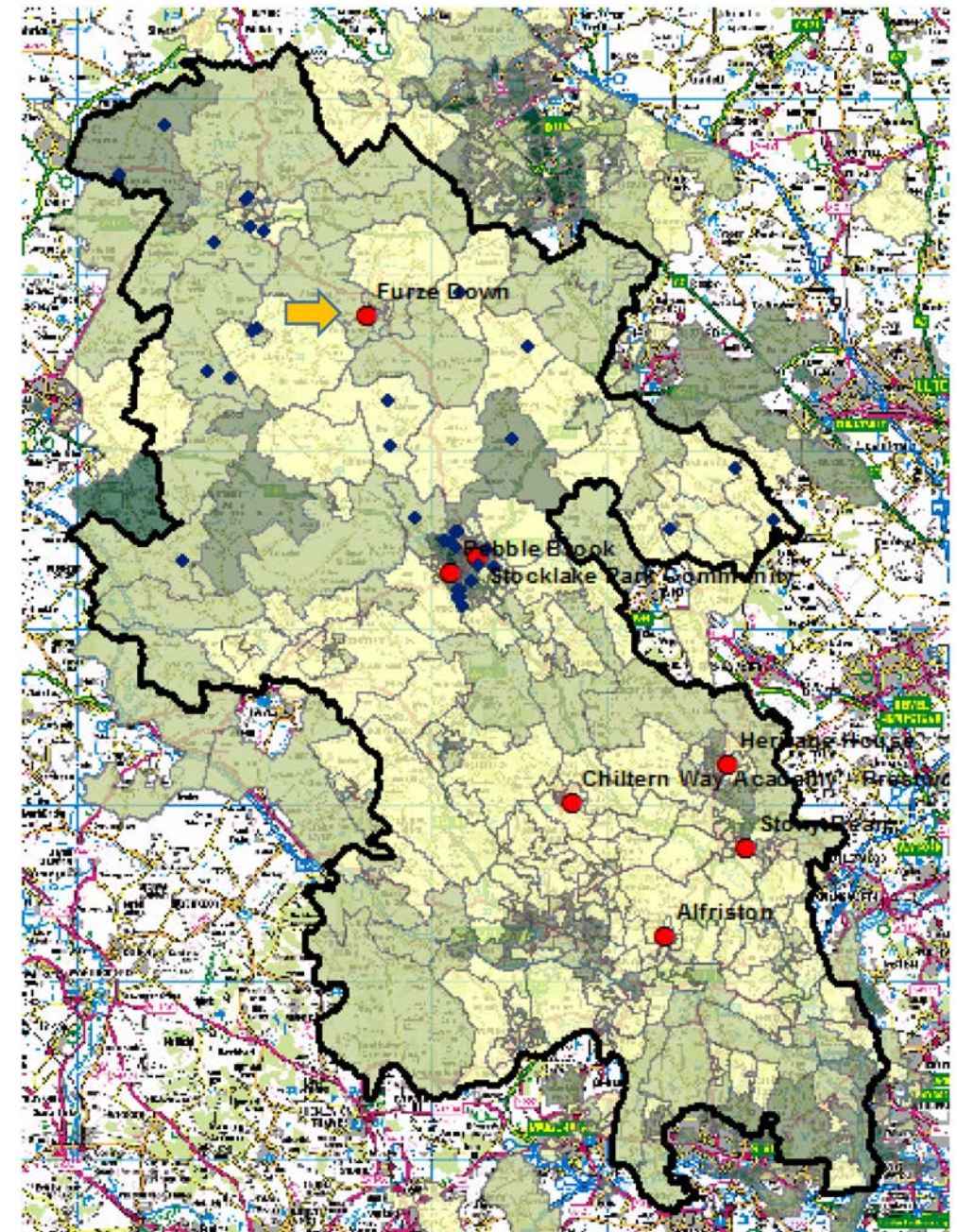
Location of Sen Post 16 clients travelling to Stocklake Park



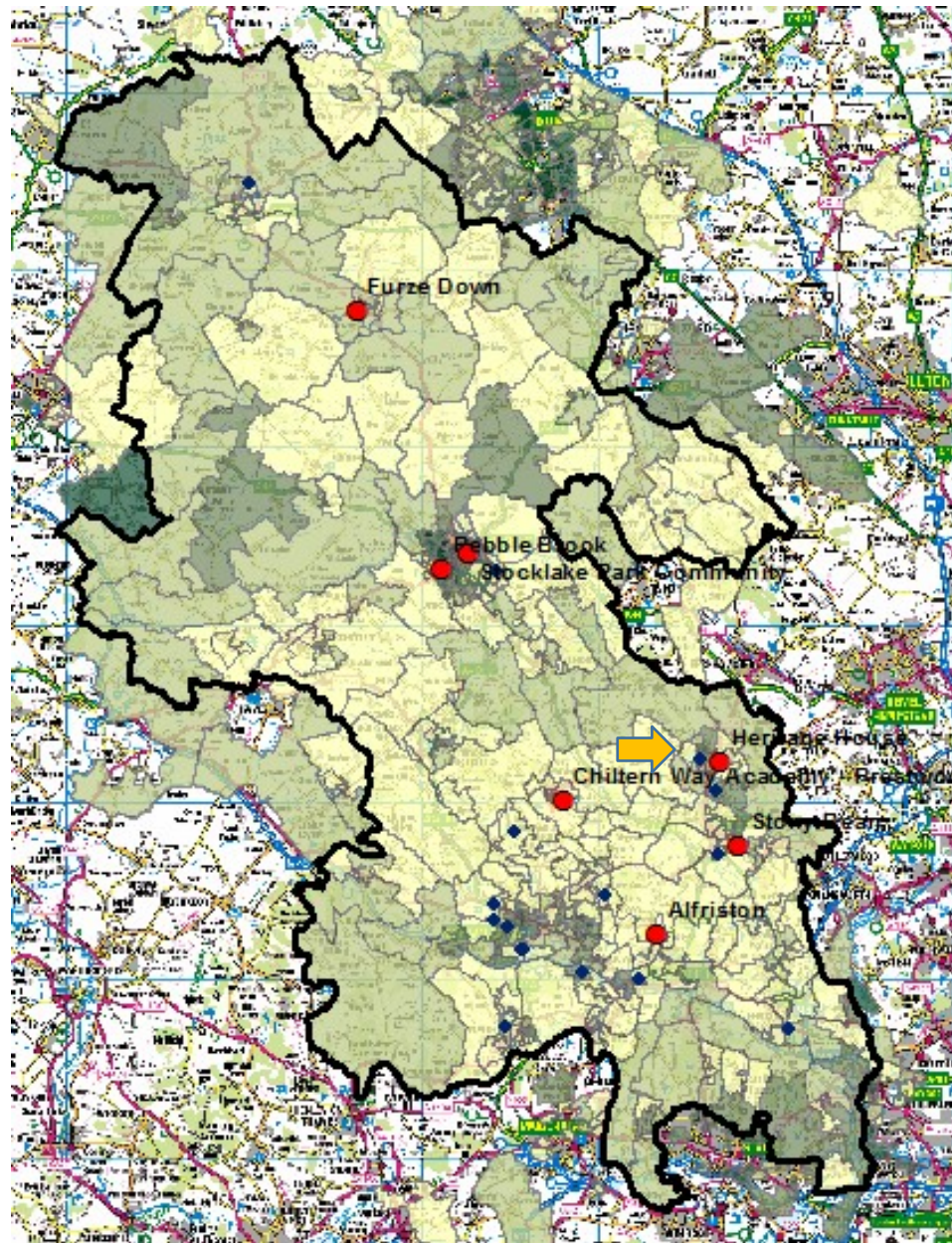
Location of Sen Post 16 clients travelling to Alfriston



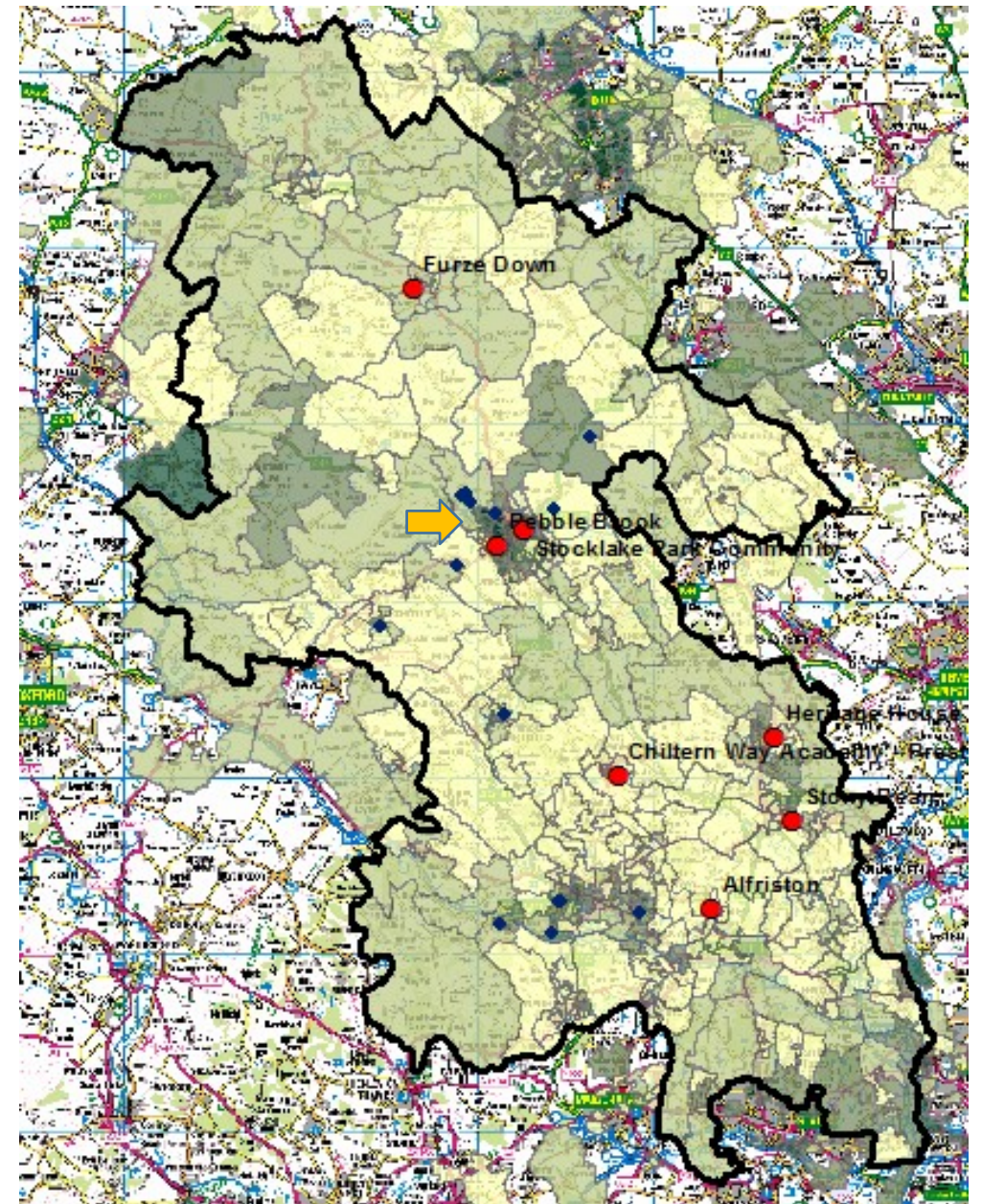
Location of Sen Post 16 clients travelling to Chiltern Way



Location of Sen Post 16 clients travelling to Furze Down

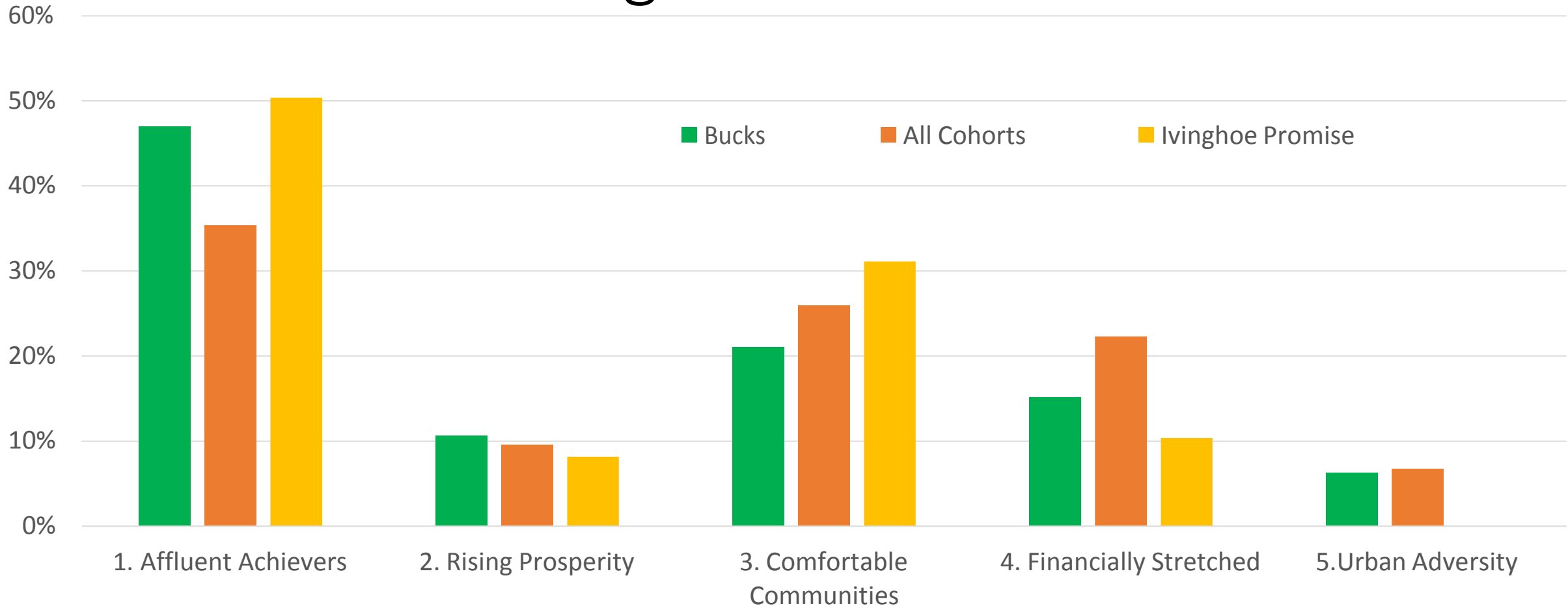


Location of Sen Post 16 clients travelling to Heritage House



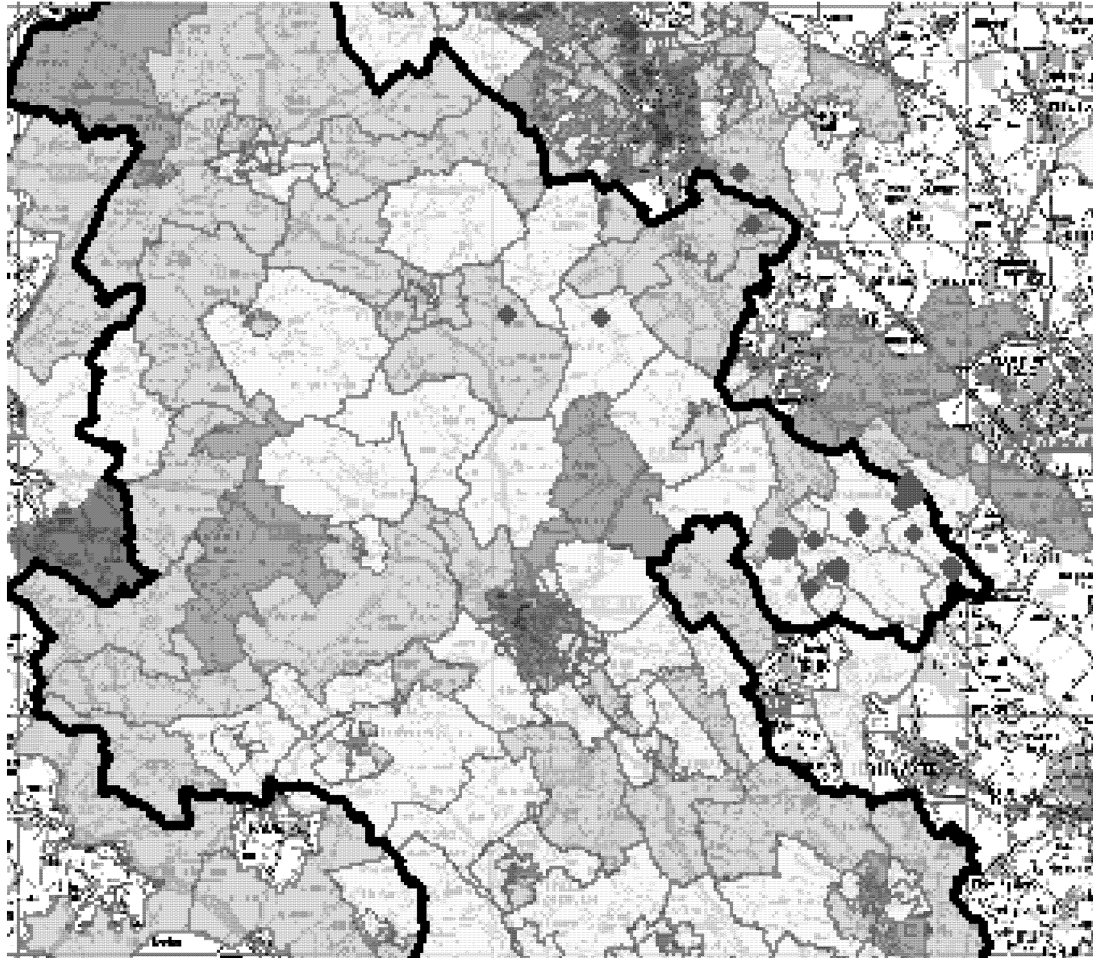
Location of Sen Post 16 clients travelling to Pebble Brook

Ivinghoe Promise

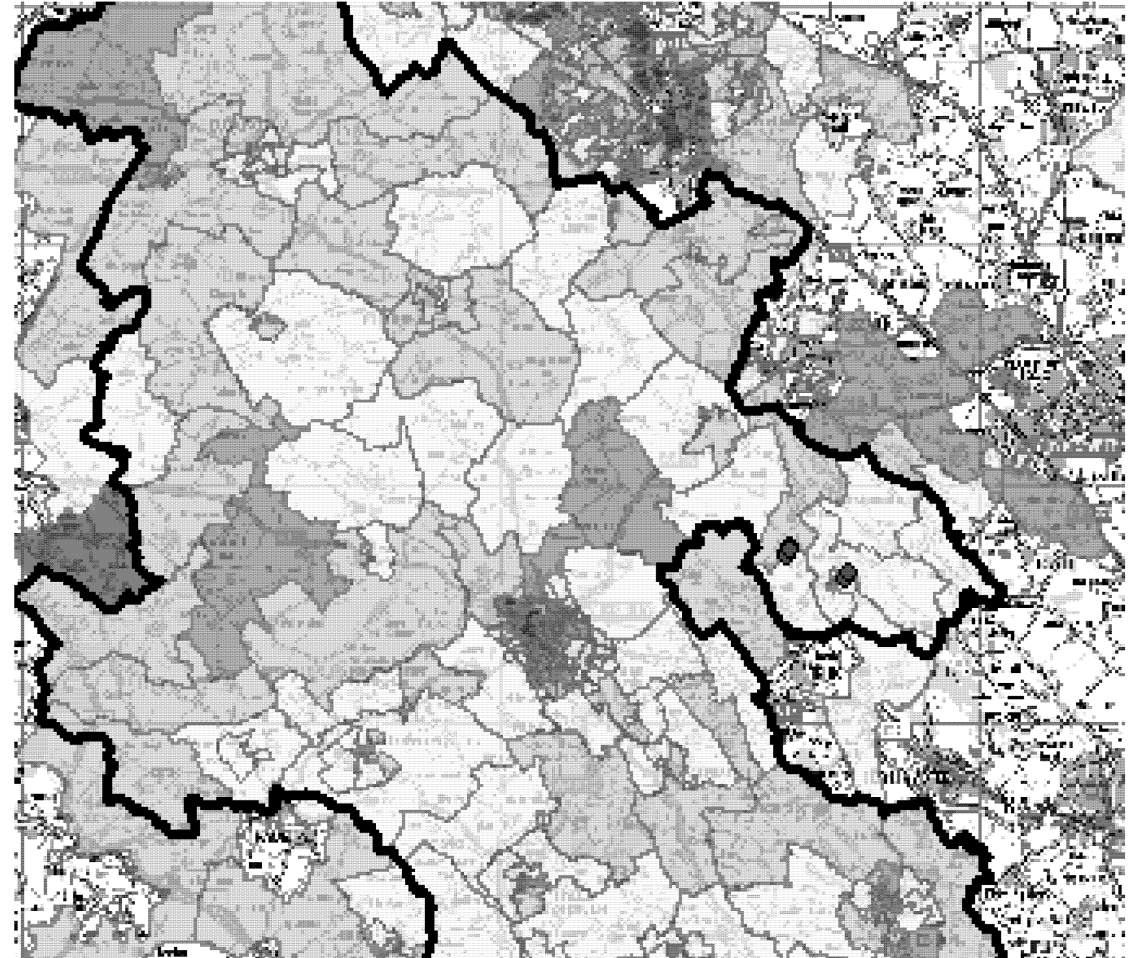


	1. Affluent Achievers	2. Rising Prosperity	3. Comfortable Communities	4. Financially Stretched	5. Urban Adversity
Bucks	47.0%	10.6%	21.0%	15.1%	6.3%
All Cohorts	35.5%	9.6%	26.0%	22.3%	6.8%
Ivinghoe	58 (50.4%)	11 (8.1%)	42 (31.1%)	14 (10.4%)	0 (0%)

The Evreham cohort has a larger percentage of vulnerable users (28.8%) than the Ivinghoe cohort (10.4%)

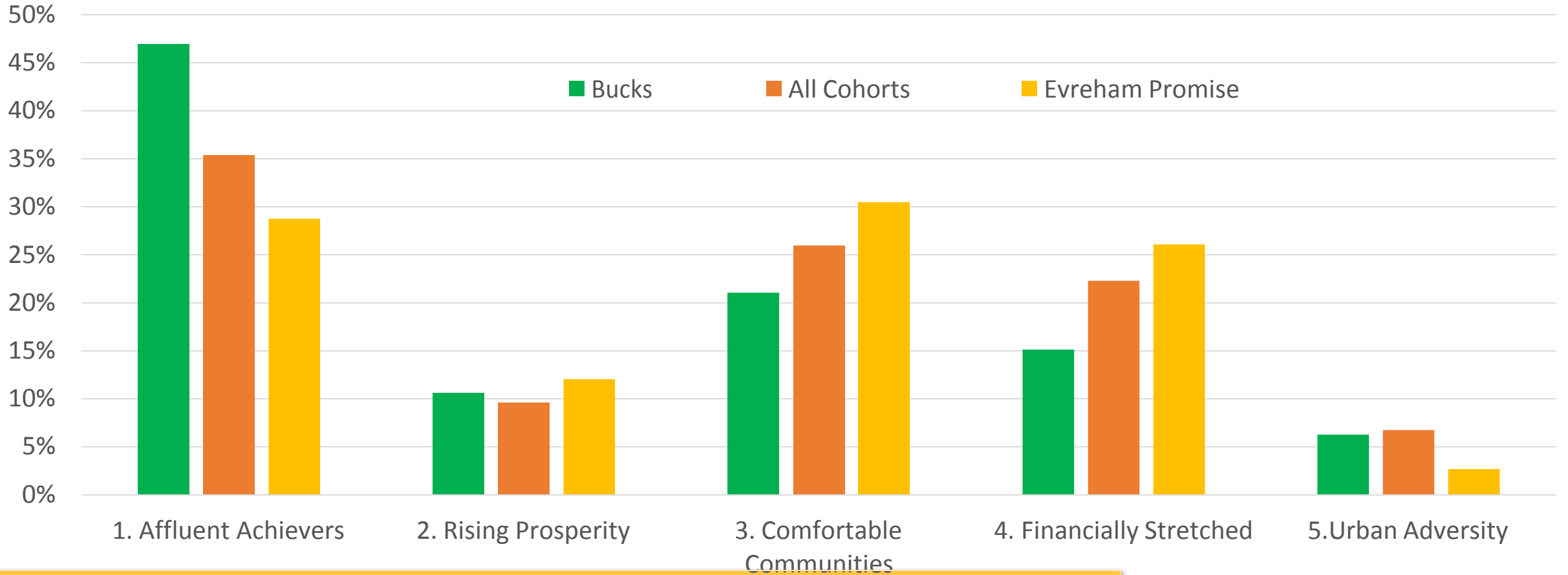


Non Vulnerable Ivinghoe Users



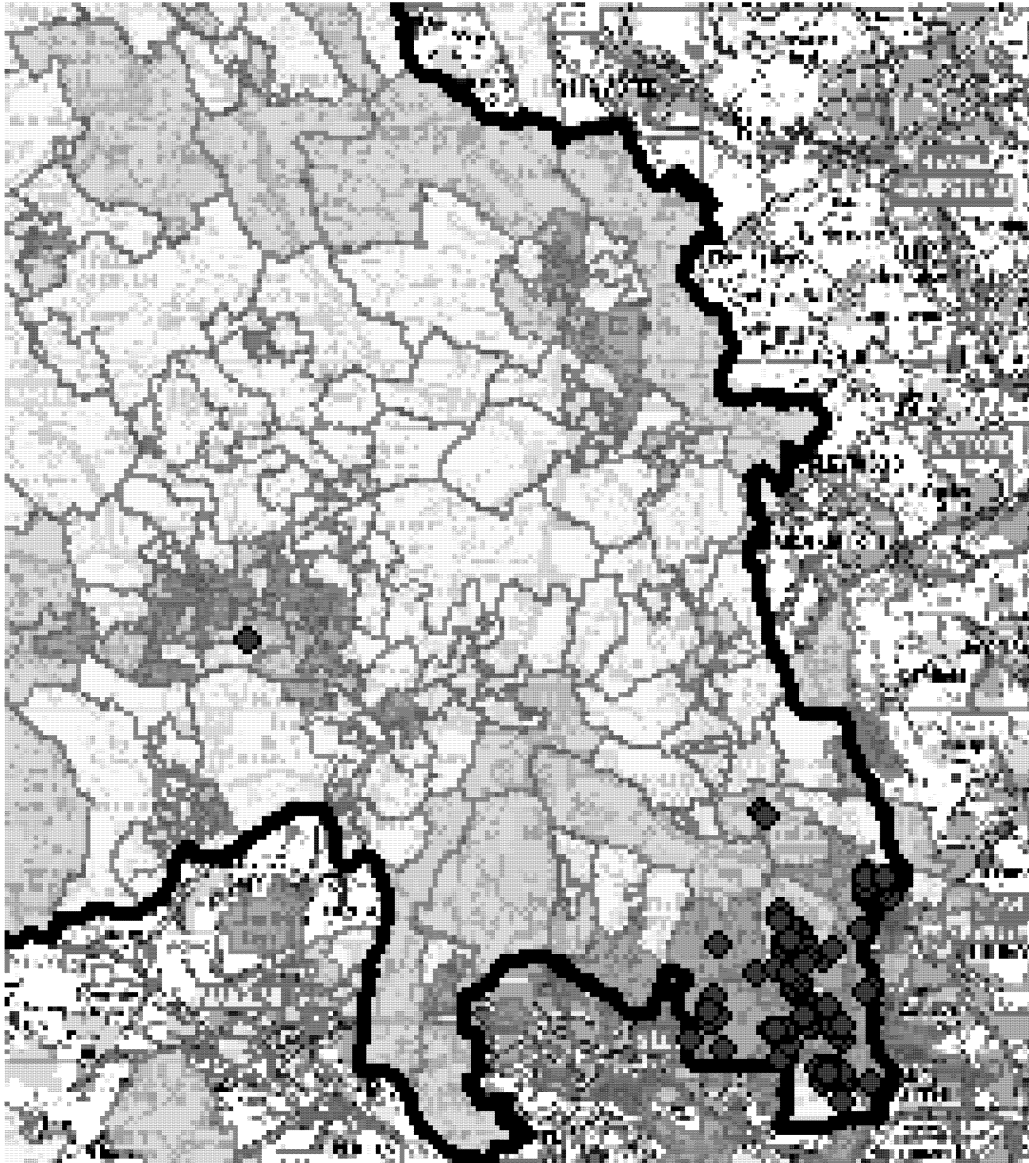
Vulnerable Ivinghoe Users

Evreham Promise

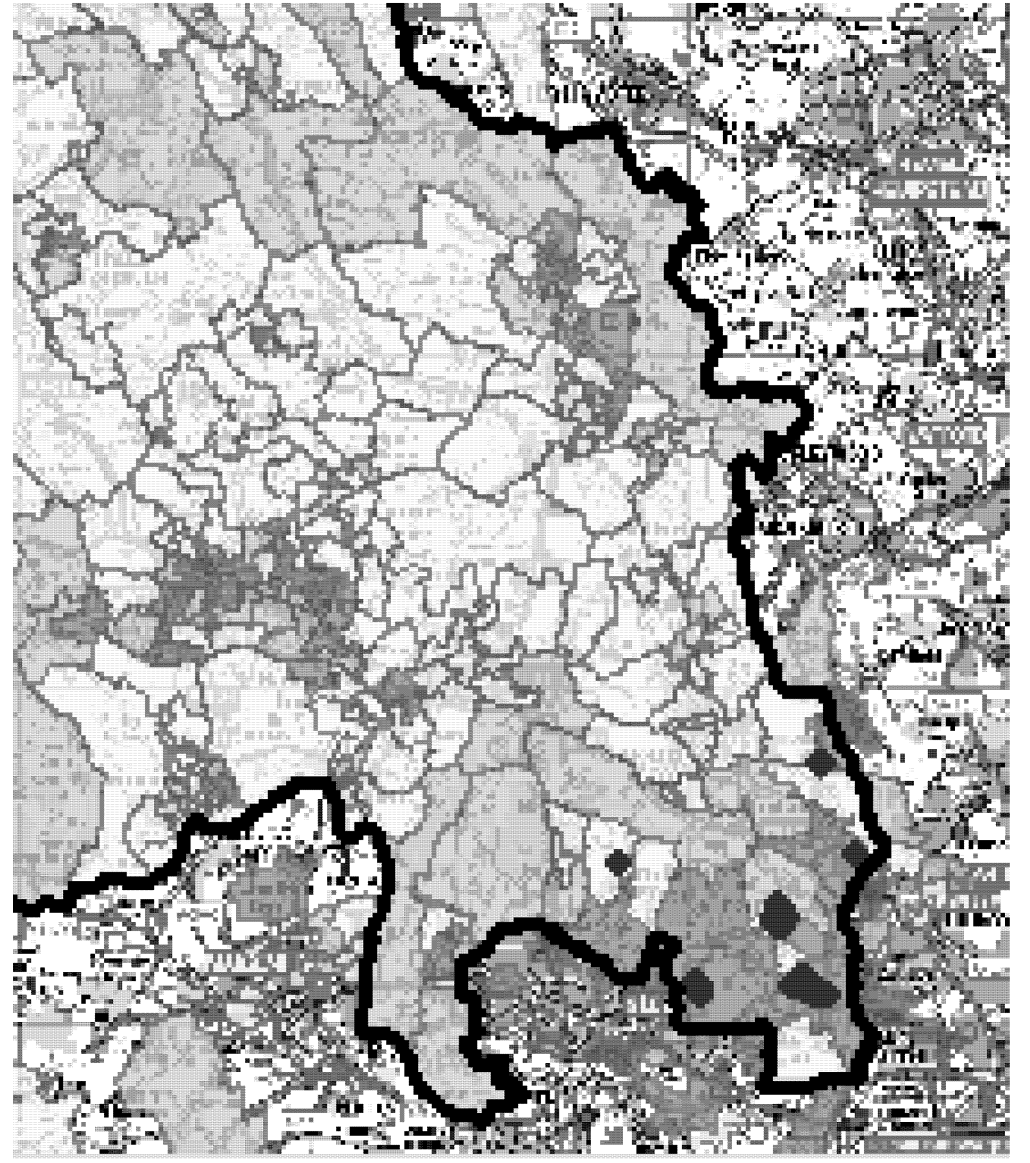


	1. Affluent Achievers	2. Rising Prosperity	3. Comfortable Communities	4. Financially Stretched	5. Urban Adversity
Bucks	47.0%	10.6%	21.0%	15.1%	6.3%
All Cohorts	35.5%	9.6%	26.0%	22.3%	6.8%
Evreham Promise	86 (28.8%)	36 (12%)	91 (30.4%)	28 (26.1%)	8 (2.7%)

The Evreham cohort has a larger percentage of vulnerable users (28.8%) than the Ivinghoe cohort (10.4%)

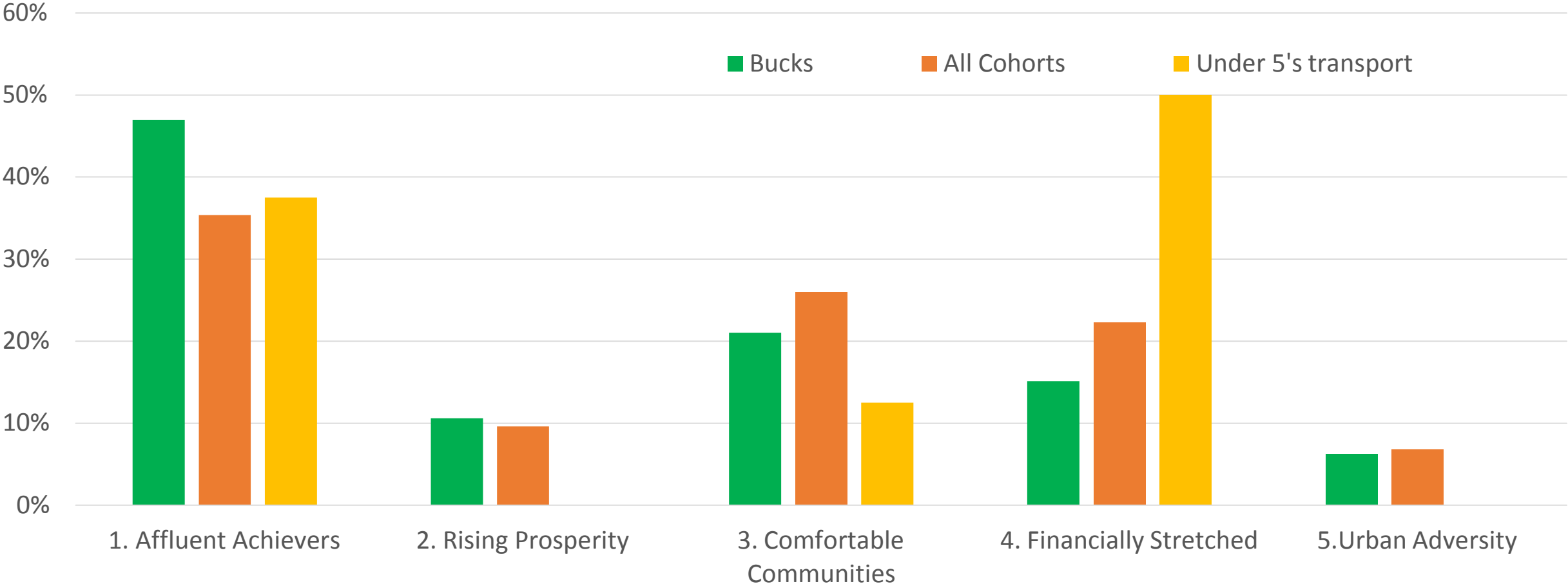


Non Vulnerable Evreham Users



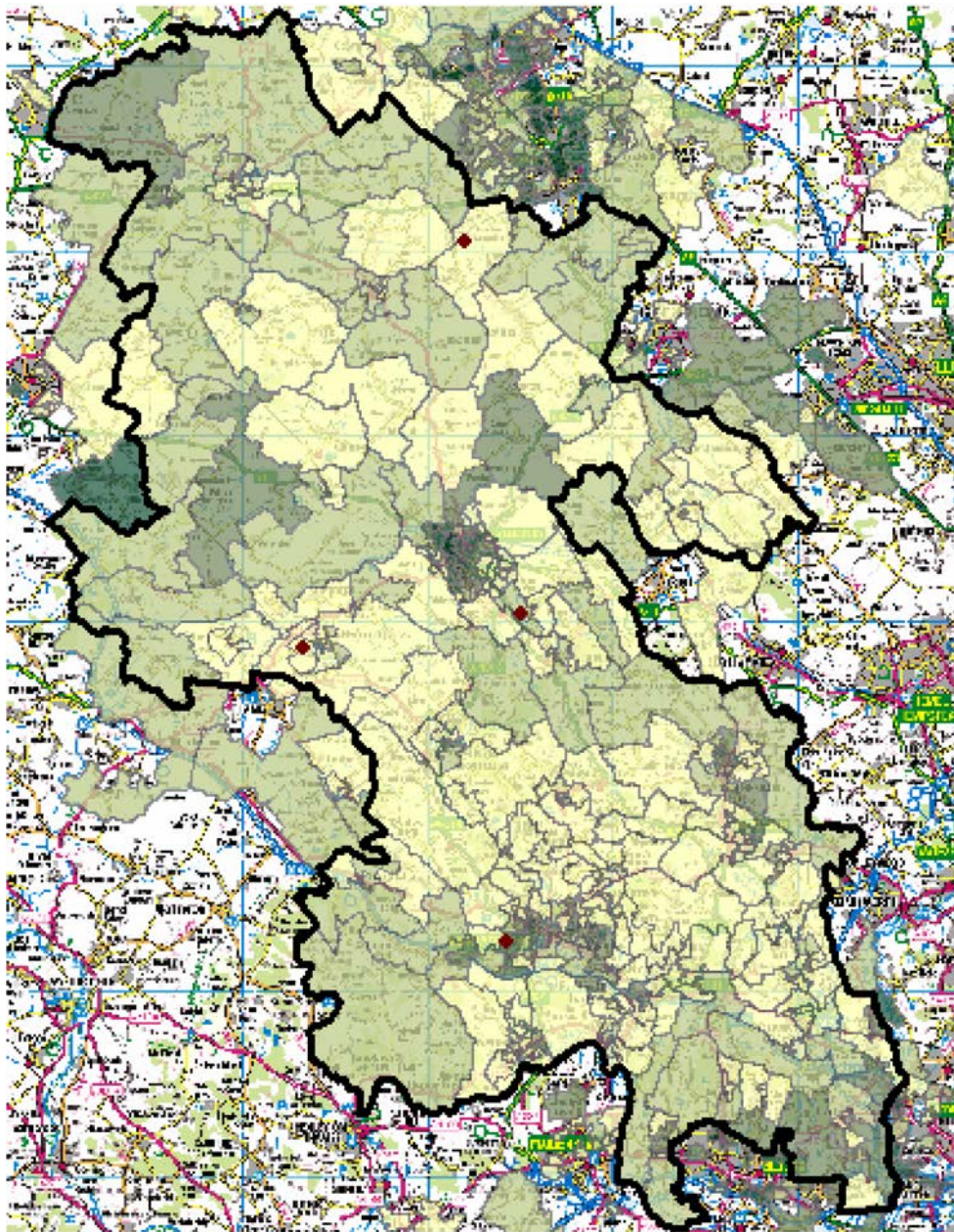
Vulnerable Evreham Users

Under 5's Transport

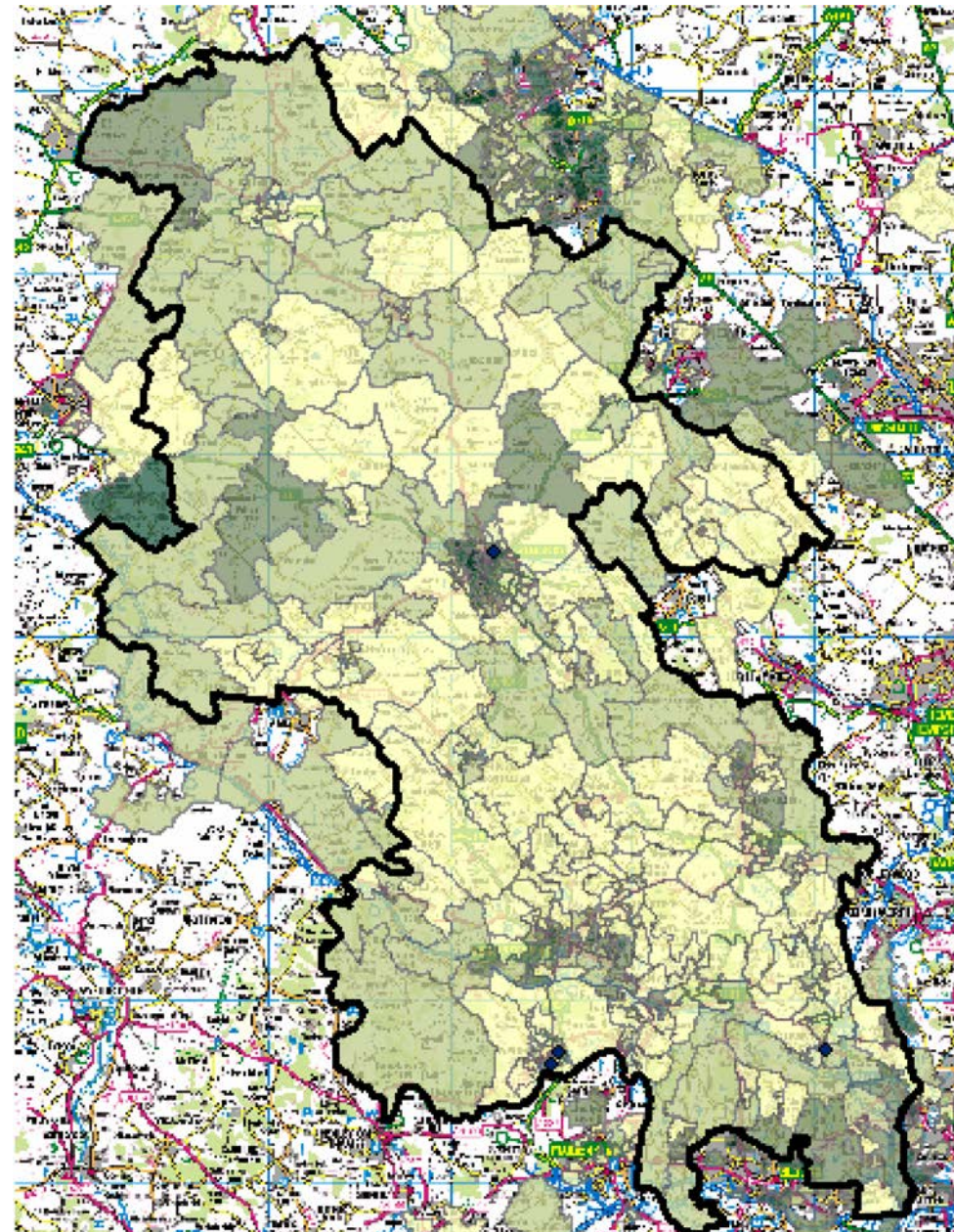


	1. Affluent Achievers	2. Rising Prosperity	3. Comfortable Communities	4. Financially Stretched	5. Urban Adversity
Bucks	47.0%	10.6%	21.0%	15.1%	6.3%
All Cohorts	35.5%	9.6%	26.0%	22.3%	6.8%
Under 5's	3 (37.5%)	0 (0%)	1 (12.5%)	4 (50%)	0 (0%)

The sample size (8) is too small for this cohort to draw any meaningful conclusion from the acorn profiles



Non Vulnerable Under 5's Users



Vulnerable Under 5's Users